

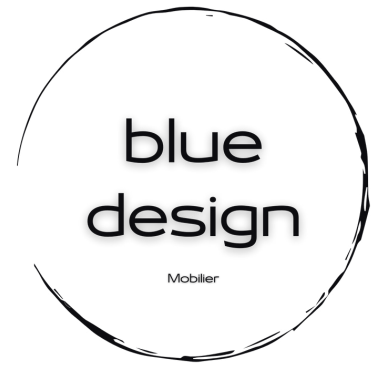
Furniture supplier



Índice



Maceteros	8
Modernos	16
Luz	50
Clásicos	70
Granito	84
Arte	96
Figuras	114
Animales	118
Personajes	136
Oriente	142
Complementos	154
Fuentes	168
Mobiliario	212
Barbacoas	230



Furniture supplier

Nuestra selección de concreto está diseñada para aquellos que buscan agregar elegancia atemporal y una resistencia impecable a su interior o exterior.

Notre sélection en béton sont conçues pour ceux qui cherchent à ajouter une élégance intemporelle et une résistance sans faille à leur intérieur ou extérieur.

Our concrete selection are designed for those looking to add timeless elegance and flawless strength to their interior or exterior.

Maceteros





Información técnica

Information technique

Technical information

Medidas - Dimensions - Measures

Las medidas de longitud están expresadas en centímetros
 Les dimensions sont exprimées en centimètres
 Measures are expressed in centimeters.

↑ Alto (cm) - Haut. - Height

↔ Ancho (cm) - Larg. - Width

↗ Fondo (cm) - Prof. - Depth

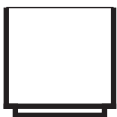
∅ Diámetro (cm) - Diamètre - Diameter

El peso se expresa en Kilogramos y la capacidad en Litros
 Le poids s'exprime en Kilogramme, et la capacité en Litres.
 The weight is expressed in Kilogram, and the capacity in Liters.

Kg: Kilogramos - Kilogrammes - Kilograms

L: Litros - Litres - Liters

Croquis - Croquis - Drawing




Croquis realizados a escala aproximada para identificar el acabado y para comparar el tamaño con otro producto de manera orientativa. No debe utilizarse para mediciones exactas.

Croquis réalisés à échelle approximative afin d'identifier la finition, et de pouvoir comparer la taille de plusieurs articles entre elles d'une manière orientative. Ne pas prendre comme mesures exactes.

Drawings made to approximate scale in order to identify the finish, and to be able to compare the size of several items with each other in an orientative way. Do not take as exact measurements.

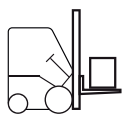
Iluminación - Illumination - Lightning

- | | |
|--|--|
| <p>LED Iluminados con luz LED.
Illumination en LED.
LED lighting.</p> | <p>Disponible en luz blanca o en multicolor.
Disponible en éclairage blanc ou multicolore.
Available in white or multicolored lighting.</p> |
| <p>IP67 Protección IP67.
Protection IP67.
IP67 Protection.</p> | <p> Incluyen mando a distancia para el control de la luz.
Inclus télécommande à distance pour le contrôle de la lumière.
Included remote control for light control.</p> |



Diseñados con un sistema de iluminación innovador.
 Conçus avec un système d'illumination innovant.
 Designed with an innovative lighting system.

Leyenda - Légende - Legend



Maceteros que pueden moverse con carretilla elevadora o transpaleta
 Ces contenants peuvent être déplacés avec fenwick ou transpalette
 These containers can be moved with fenwick or pallet truck

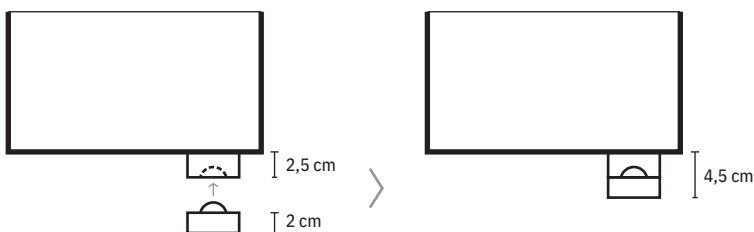
Accesorios - Accessoires - Accessories

Escabel

Disponible en cualquier color de su gama. Vendidos en packs de 4 unidades.
 Adaptables a todas las patas de nuestros maceteros.

Disponibles dans toutes les couleurs de notre gamme. Vendus par pack de 4 unités.
 Elles s'adaptent à tous les pieds de nos contenants.

Available in all the colors in our range. Sold in packs of 4 units. They adapt to all the feet of our pots.



Ruedas - Roulettes - Wheels

Juego de 4 ruedas disponibles para las referencias que no llevan plato. Permiten un desplazamiento agradable en suelos lisos.

Set de 4 roues disponibles sur les références de nos contenants vendus sans soucoupes. Permettent un déplacement agréable sur sols lisses.

Set of 4 wheels available on the references of our containers sold without saucers. Allows pleasant movement on smooth floors.



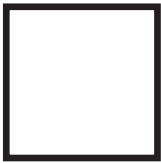
x 4

Colores por acabados - Finitions couleurs - Colours finishes

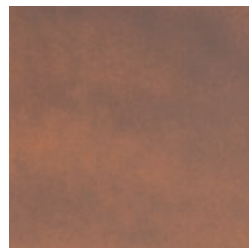
Colores Arlequín: Proyecciones de pinturas especiales. Superficies lisas y satinadas.
Couleurs Arlequin: Pulvérisation de peintures spéciales. Surfaces lisses et satinées.
Arlequin colours: Spraying with special paints. Smooth and satin surfaces.

Colores Natural: Tintas naturales aplicadas con productos sintéticos.
Couleurs Natural: Application de teintures naturelles avec des produits synthétiques.
Natural colors: Application of natural tints with synthetic products

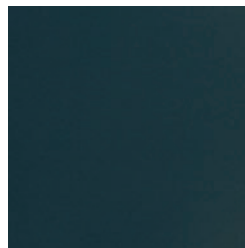
Liso Lisse Smooth



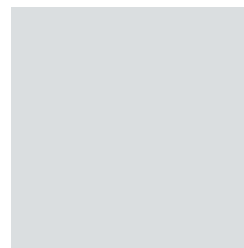
Colores Arlequín - Couleurs Arlequin - Arlequin colours



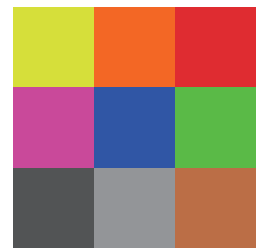
Bronce



Antracita

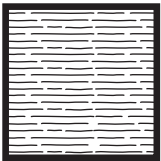


Hielo

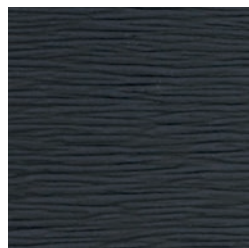


Cualquier color de la carta RAL
- Couleur au choix dans le nuancier RAL - Color of your choice from the RAL color chart

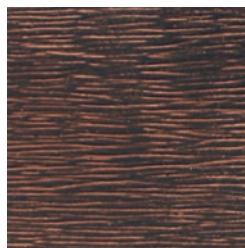
Líneas Lignes Lines



Colores Arlequín - Couleurs Arlequin - Arlequin colours



Wengué



Óxido



Antracita



Cualquier color de la carta RAL
- Couleur au choix dans le nuancier RAL - Color of your choice from the RAL color chart

Todos los colores disponibles para el acabado Líneas están disponibles para el acabado Triángulo.

Toutes les couleurs disponibles pour la finition Líneas sont disponibles pour la finition Triangle.

All the colors available for the Líneas finish are available for the Triangle finish.

Colores Natural - Couleurs Natural - Natural colors



Blanco



Tizón

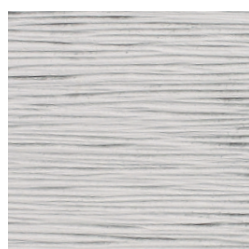
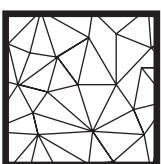


Ocre



Verde

Triángulo Triangle Triangle



Gris

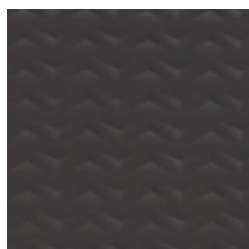


Cemento

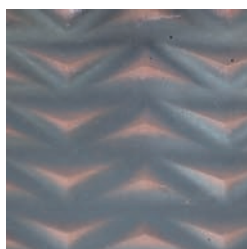
Simétrico
Symétrique
Symmetrical



Colores Arlequín - Couleurs Arlequin - Arlequin colours



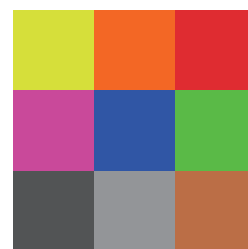
Wengué



Óxido

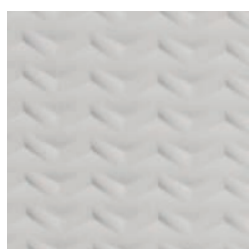


Antracita



Cualquier color de la carta RAL
- Couleur au choix dans le
nuancier RAL - Color of your
choice from the RAL color chart

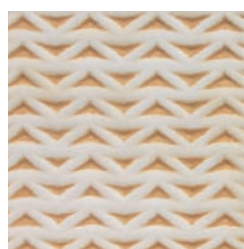
Colores Natural - Couleurs Natural - Natural colors



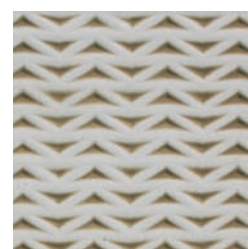
Blanco



Tizón



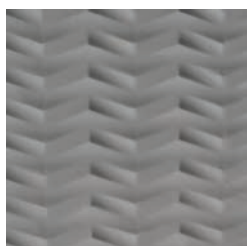
Ocre



Verde

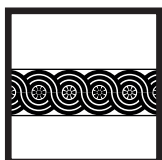


Gris



Cemento

Trenzado
Tressé
Braided



Colores Arlequín - Couleurs Arlequin - Arlequin colours



Wengué



Óxido



Antracita



Cualquier color de la carta RAL
- Couleur au choix dans le
nuancier RAL - Color of your
choice from the RAL color chart

Colores Natural - Couleurs Natural - Natural colors



Blanco



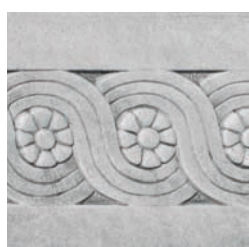
Tizón



Ocre



Verde

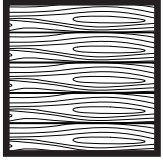


Gris



Cemento

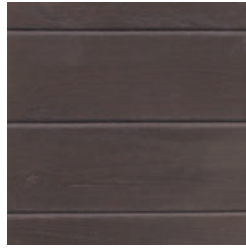
Vetas
Bois
Wood



Colores Arlequín - Couleurs Arlequin - Arlequin colours



Bohemia



Wengué

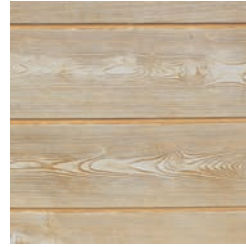
Colores Natural - Couleurs Natural - Natural colors



Blanco



Tizón



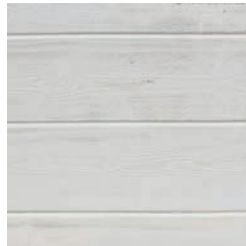
Ocre



Verde

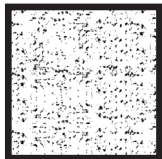


Gris



Cemento

Clásico
Classique
Classic



Colores Arlequín - Couleurs Arlequin - Arlequin colours

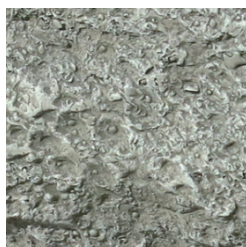


Óxido

Colores Natural - Couleurs Natural - Natural colors



Blanco



Musgo

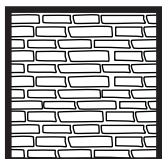


Verde



Ocre

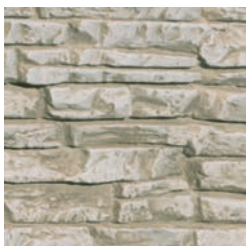
Ladrillo
Brique
Brick



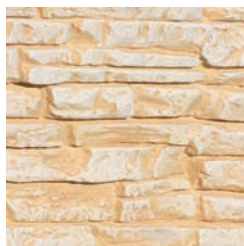
Colores Natural - Couleurs Natural - Natural colors



Musgo

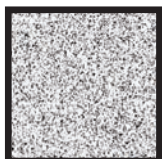


Verde

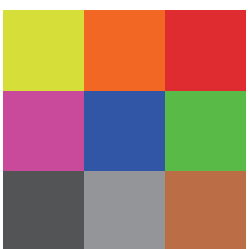


Ocre

Granito
Granit
Granite



Colores Arlequín - Couleurs Arlequin - Arlequin colours



Cualquier color de la carta RAL
- Couleur au choix dans le
nuancier RAL - Color of your
choice from the RAL color chart

Colores Natural - Couleurs Natural - Natural colors



Blanco



Maceteros Modernos

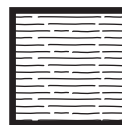
Diseñados con un estilo actual y vanguardista

Acabados

Liso



Lineas



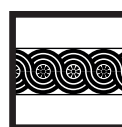
Triangulo



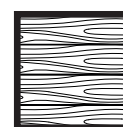
Simétrico



Trenzado



Vetas



Colores

Consultar página 12 - Consulter la page 12
- Consult the page 12

Súper Ámber

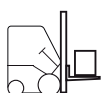


↔118 x ↗49 x ↑65
210 Kg - 260 L

Súper Futura



↔118 X ↗49 ↑65 X
210 Kg - 260 L



Maceteros ideales para usarse como mobiliario urbano, delimitando espacios, zonas peatonales, etc.
Fáciles de mover con carretilla elevadora o transpaleta.

Contenants idéaux pour usage comme mobilier urbain, pour délimiter des espaces, en zones piétonnes, etc.
Faciles à déplacer avec fenwick ou transpalette.

Ideal containers for use as urban furniture, to delimit spaces, in pedestrian areas, etc. Easy to move with
fenwick or pallet truck.



Spencer



↔57 x ↗17 x ↑19
15 Kg - 11 L

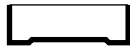


↔90 x ↗27 x ↑37
44 Kg - 63 L



↔90 x ↗38 x ↑47
72 Kg - 130 L

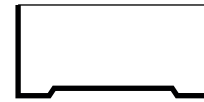
Ámber



↔60 X ↗17 ↑19
15 Kg - 11 L



↔90 x ↗29 x ↑38
44 Kg - 63 L



↔90 X ↗38 x ↑48
72 Kg - 130 L

Futura



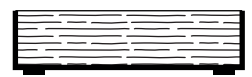
↔60 x ↗17 x ↑19
15 Kg - 11 L



↔80 x ↗17 x ↑19
20 Kg - 16 L



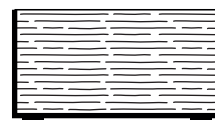
↔80 x ↗27 x ↑31
29 Kg - 45 L



↔100 x ↗27 x ↑31
38 Kg - 65 L



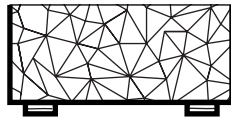
↔90 x ↗27 x ↑37
44 Kg - 63 L



↔90 x ↗40 x ↑48
72 Kg - 130 L

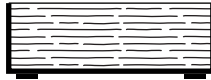


Anna



↔98 x ↗28,5 x ↑43
51 Kg - 107 L

Gaetán

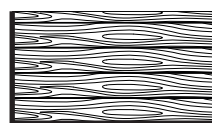


↔90 x ↗40 x ↑30
52 Kg - 80 L

Vendome

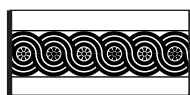


↔90 x ↗29 x ↑37
49 Kg - 70 L

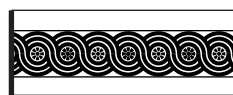


↔90 x ↗38 x ↑48
76 Kg - 130 L

Cacola



↔80 x ↗29 x ↑38
48 Kg - 62 L



↔100 x ↗35 x ↑38
65 Kg - 98 L





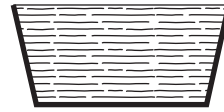
Sabinia



↔79 x ↗30 x ↑40
52 Kg - 64 L



↔76 x ↗29
10 Kg



↔95 x ↗42 x ↑47
75 Kg - 133L



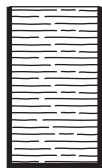
↔90 x ↗37
21 Kg

Aroa



↔60 x ↗25 x ↑42
35 Kg - 43 L

Aspel



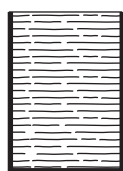
↔40 x 40 x ↑70
52 Kg - 84 L

Keros

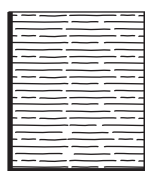


↔30 x ↗25 x ↑42
21 Kg - 20 L

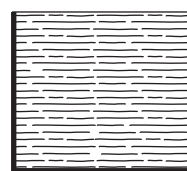
Tulip



↔50 x ↗25 x ↑70
47 Kg - 62 L



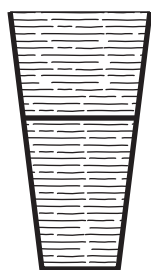
↔60 x ↗25 x ↑70
52 Kg - 75 L



↔79 x ↗32 x ↑70
98 Kg - 142 L



Súper Vasari



Tapa Doble Fondo
Plaque double fond
Double bottom lid

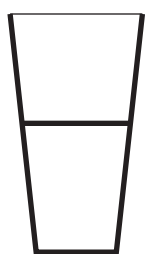
↑ 46cm 66 L

↔ 45 x 45 x ↑ 98
86 Kg - 116 L



↔ 39 x 39 x ↑ 4
8 Kg

Dikens



Tapa Doble Fondo
Plaque double fond
Double bottom lid

↑ 50cm 120 L

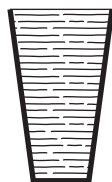
↔ 58 x 58 x ↑ 105
112 Kg - 206 L



↔ 46 x 46 x ↑ 5
12 Kg



Vasari



↔37 x 37 x ↑70
32 Kg - 55 L



↔30 x 30 ↑5
5 Kg



↔29 x 29 x ↑50
22 Kg - 23 L



↔25 x 25 ↑5
5 Kg

Smart



↔42 x 42 x ↑47
29 Kg - 45 L

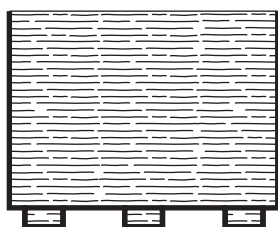


↔37 x 37 x ↑4
7,5 Kg



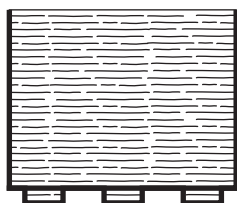
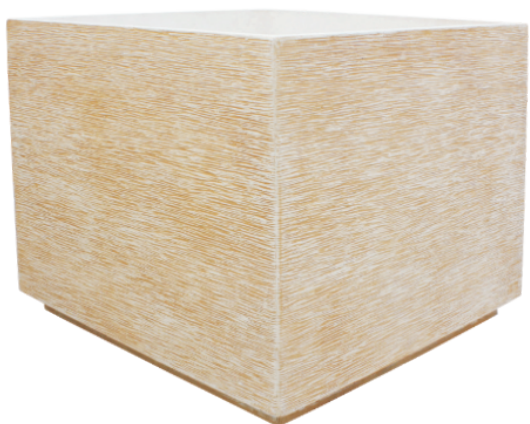


Súper Maxi



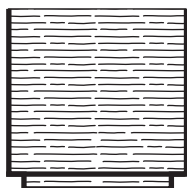
↔ 118 x 118 x ↑ 95
920 Kg - 940 L

Maxi



↔ 99 x 99 x ↑ 85
490 Kg - 600 L

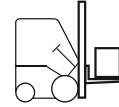
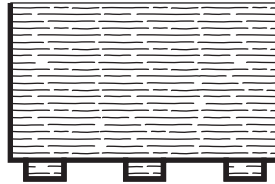
Mini Maxi



↔ 78 x 78 x ↑ 79
270 Kg - 340 L

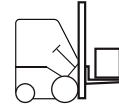
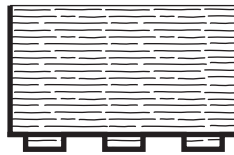


Súper Maxi Cut



↔ 118 x 118 x ↑ 73
789 Kg - 683 L

Maxi Cut



↔ 99 X 99 x ↑ 65
406 Kg - 438 L

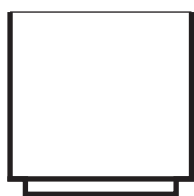
Mini Maxi Cut



↔ 78 x 78 x ↑ 50
195 Kg - 184 L



Súper Boreal



↔80 x 80 x ↑ 81
220 Kg - 394 L





Boreal



↔40 x 40 x ↑45
39 Kg - 55 L



↔49 x 49 x ↑59
51 Kg - 100 L



↔58 x 58 x ↑72
102 Kg - 185 L

Chester



↔39 x 39 x ↑47
39 Kg - 55 L

Perfect



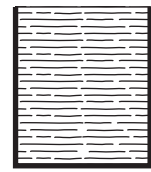
↔33 x 33 x ↑40
24 Kg - 36 L



↔40 x 40 x ↑48
39 Kg - 55 L



↔49 x 49 x ↑55
51 Kg - 100 L



↔58 x 58 x ↑70
102 Kg - 180 L

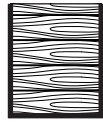


Nessa

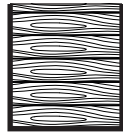


↔49 x 49 x ↑55
51 Kg - 96 L

Vintage



↔40 x 40 x ↑48
42 Kg - 55 L



↔49 x 49 x ↑55
56 Kg - 100 L

Sicola



↔45 x 45 x ↑53
61 Kg - 80 L

Hanoi



↔39 x 39 x ↑56
23 Kg - 55 L



↔32 x 32 x ↑4
6,5 Kg



↔49 x 49 x ↑69
52 Kg - 111 L

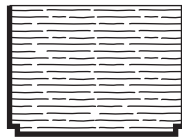


↔37 x 37 x ↑4
7,5 Kg



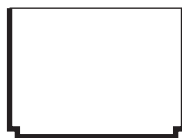


Legen



ø78 x ↑56
106 Kg - 186 L

Lusian



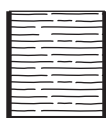
ø78 x ↑56
106 Kg - 186 L



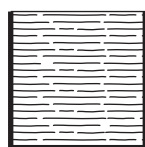
Open



ø39 x ↑40
22 Kg - 34 L

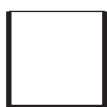


ø45 x ↑47
33 Kg - 55 L



ø58 x ↑60
68 Kg - 120 L

Teide



ø45 x ↑45
33 Kg - 55 L

Roncola



ø45 x ↑48
34 Kg - 56 L







Agapita



ø65 x ↑32
40 Kg - 42 L



ø100 x ↑34
100 Kg - 106 L

Melva



ø35 x ↑39
15 Kg - 23 L



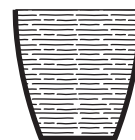
ø31
Plato Opcional



ø45 x ↑49
29 Kg - 57 L



ø37
Plato Opcional



ø55 x ↑60
42 Kg - 98 L



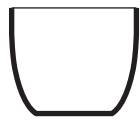
ø43
Plato Opcional



Jade



ø45 x ↑ 38
18 Kg - 70 L



ø55 x ↑ 48
29 Kg - 33 L

Kira



ø45 x ↑ 65
27 Kg - 58L





Style

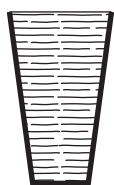


ø45 x ↑47
22 Kg - 45 L



ø37 x ↑4
5 Kg

Magnus



ø40 x ↑71
26 Kg - 48 L



ø30 x ↑4
4 Kg







Maceteros Luz

Combinación
de luz y formas
para generar un
entorno único

Acabados

Liso



Lineas



Colores

Consultar página 12 - Consulter la page 12
- Consult the page 12

Iluminación



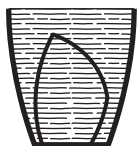
Incluye mando a distancia - Teletélécommande
include - Remote control included

Opciones de Luz: Blanca o Multicolor
Option d'éclairage : Blanc ou Multicolore
Lighting option: White or Multicolor

Bellos de día



Melva Luz

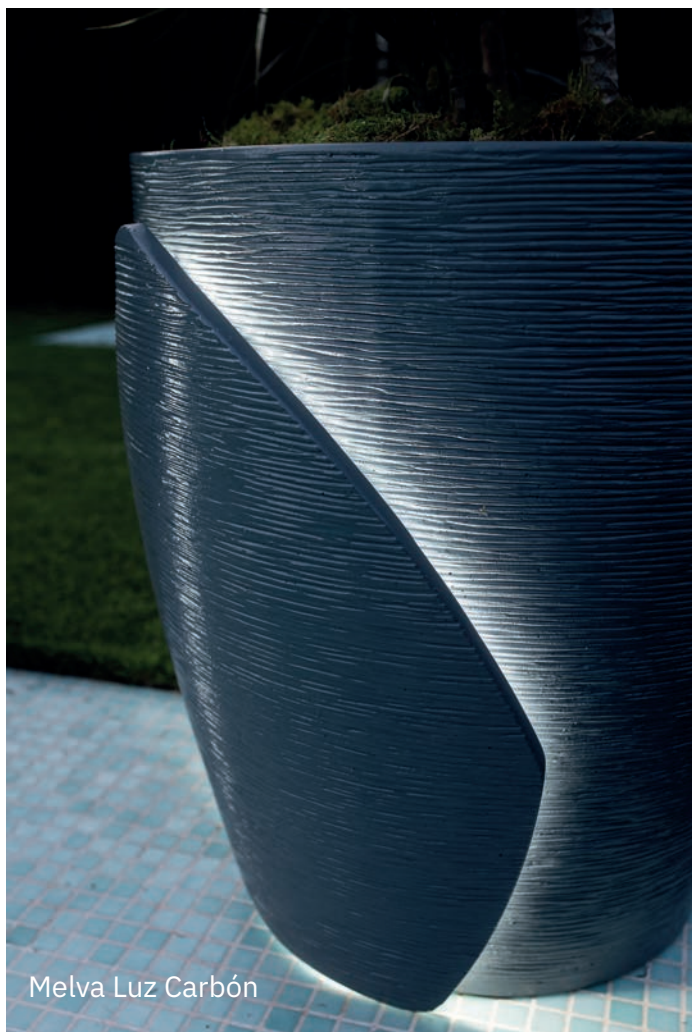


Ø 55 X 160

42 Kg - 98 L

LED IP67 

Opciones de Luz: White o Multicolor -
Option d' éclairage: Blanc ou Multicolore -
Lighting option: White or Multicolor



Melva Luz Carbón



Espectaculares de noche



Perfect Luz



↔40 x 40 x ↑48

39 Kg - 55 L

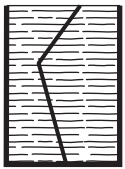
LED IP67

Opciones de Luz: White o Multicolor -
Option d'éclairage: Blanc ou Multicolore -
Lighting option: White or Multicolor

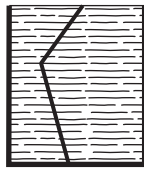




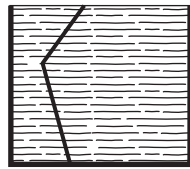
Tulip Luz



↔50 x ↗25 x ↑70
47 Kg - 62 L



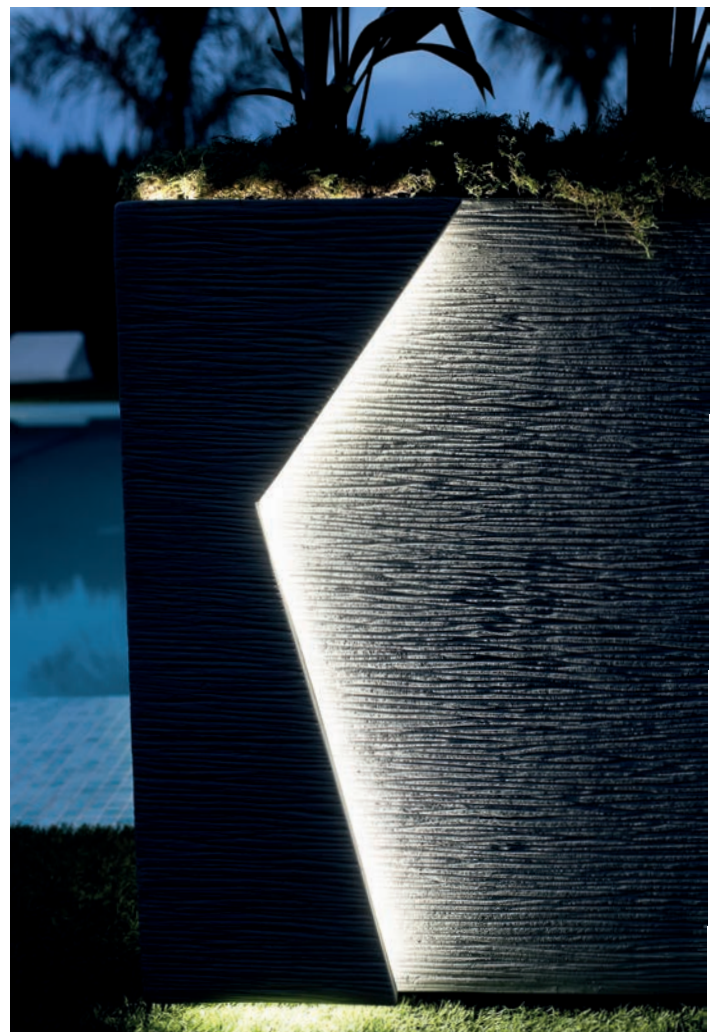
↔60 x ↗25 x ↑70
52 Kg - 75 L



↔79 x ↗32 x ↑70
98 Kg - 142 L

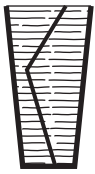
LED IP67

Opciones de Luz: White o Multicolor -
Option d' éclairage: Blanc ou Multicolore -
Lighting option: White or Multicolor





Vasari Luz



↔37 x ↗37 x ↑70 Ø30 X ↑4
32 Kg - 55 L 4 Kg

LED IP67

Opciones de Luz: White o Multicolor -
Option d' éclairage: Blanc ou Multicolore -
Lighting option: White or Multicolor



Futura Luz



↔90 X ↗27 x ↑37
44 Kg - 63 L

LED IP67

Opciones de Luz: White o Multicolor -
Option d' éclairage: Blanc ou Multicolore -
Lighting option: White or Multicolor





Ilumina el macetero desde la base

Plato Redondo Luz



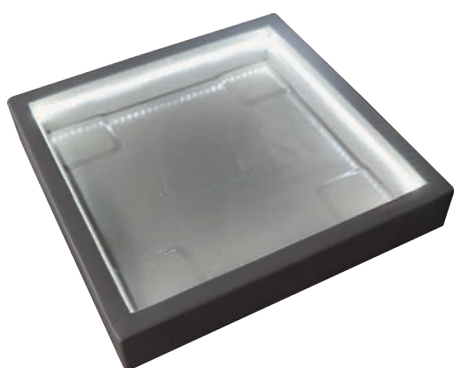
ø55 x 18 Exterior
ø40 Interior
17 Kg

LED IP67 

Opciones de Luz: White o Multicolor - Option d'éclairage: Blanc ou Multicolore - Lighting option: White or Multicolor



Plato Cuadrado Luz



↔50 x 50 x 18 Exterior
↔40 x 40 Interior
17 Kg

LED IP67 

Opciones de Luz: White o Multicolor - Option d'éclairage: Blanc ou Multicolore - Lighting option: White or Multicolor



Los Platos Luz se venden por separado para cualquier macetero compatible por tamaño.

Les Platos Luz sont vendus séparément pour toute jardinière de taille compatible.

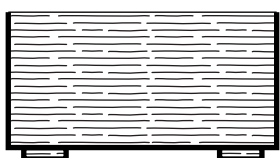
The Platos Luz are sold separately for any compatible size planter.






Luz en la base del macetero.

Súper Futura Luz

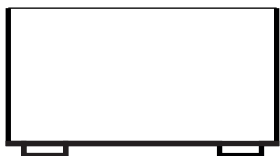


↔118 x ↗49 x ↑65
210 Kg - 260 L


LED IP67 

Opciones de Luz: White o Multicolor -
Option d'éclairage: Blanc ou Multicolore -
Lighting option: White or Multicolor

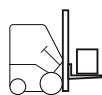
Súper Ámber



↔118 x ↗49 x ↑65
210 Kg - 260 L

LED IP67 

Opciones de Luz: White o Multicolor -
Option d'éclairage: Blanc ou Multicolore -
Lighting option: White or Multicolor



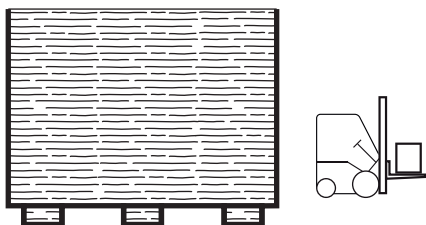
Maceteros ideales para usarse como mobiliario urbano, delimitando espacios, zonas peatonales, etc. Fáciles de mover con carretilla elevadora o transpaleta.
Contenants idéaux pour usage comme mobilier urbain, pour délimiter des espaces, en zones piétonnes, etc. Faciles à déplacer avec fenwick ou transpalette.

Ideal containers for use as urban furniture, to delimit spaces, in pedestrian areas, etc. Easy to move with fenwick or pallet truck.





Súper Maxi Luz



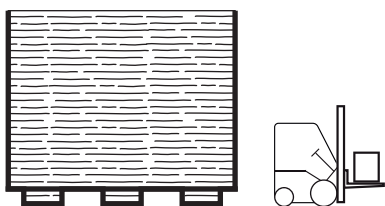
↔ 118 x 118 x ↑ 95

920 Kg - 940 L

LED IP67

Opciones de Luz: White o Multicolor -
Option d' éclairage: Blanc ou Multicolore -
Lighting option: White or Multicolor

Maxi Luz



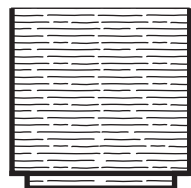
↔ 99 x 99 x ↑ 85

490 Kg - 600 L

LED IP67

Opciones de Luz: White o Multicolor -
Option d' éclairage: Blanc ou Multicolore -
Lighting option: White or Multicolor

Mini Maxi Luz



↔ 78 x 78 x ↑ 79

270 Kg - 340 L

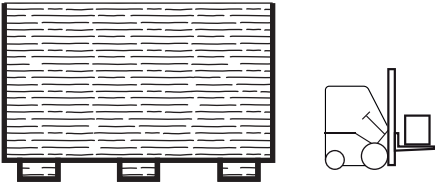
LED IP67

Opciones de Luz: White o Multicolor -
Option d' éclairage: Blanc ou Multicolore -
Lighting option: White or Multicolor





Súper Maxi Cut Luz



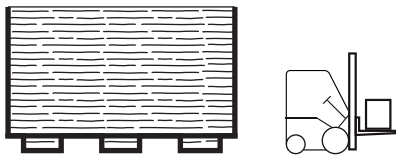
↔ 118 X 118 x ↑ 73

789 Kg - 683 L

LED IP67

Opciones de Luz: White o Multicolor -
Option d'éclairage: Blanc ou Multicolore -
Lighting option: White or Multicolor

Maxi Cut Luz



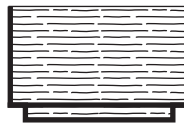
↔ 99 X 99 x ↑ 65

406 Kg - 438 L

LED IP67

Opciones de Luz: White o Multicolor -
Option d'éclairage: Blanc ou Multicolore -
Lighting option: White or Multicolor

Mini Maxi Cut Luz



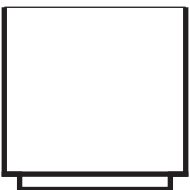
↔ 78 x 78 x ↑ 50

195 Kg - 184 L

LED IP67

Opciones de Luz: White o Multicolor -
Option d'éclairage: Blanc ou Multicolore -
Lighting option: White or Multicolor

Súper Boreal Luz



↔ 80 x 80 x ↑ 81

220 Kg - 394 L

LED IP67

Opciones de Luz: White o Multicolor -
Option d'éclairage: Blanc ou Multicolore -
Lighting option: White or Multicolor



MODELO
DE UTILIDAD
REGISTRADO

Lusian Luz



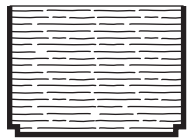
Ø 78 X ↑ 56

106 Kg - 186 L

LED IP67

Opciones de Luz: White o Multicolor -
Option d'éclairage: Blanc ou Multicolore -
Lighting option: White or Multicolor

Legen Luz

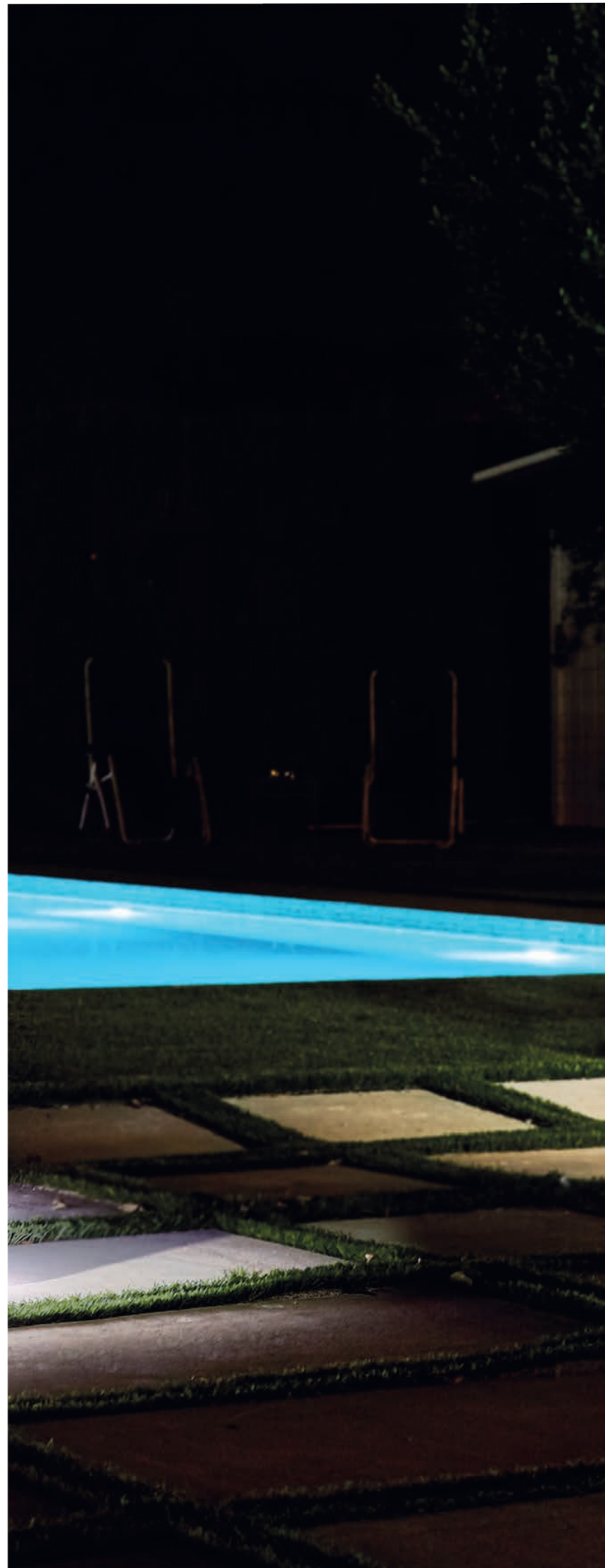


Ø 78 X ↑ 56

106 Kg - 186 L

LED IP67

Opciones de Luz: White o Multicolor -
Option d'éclairage: Blanc ou Multicolore -
Lighting option: White or Multicolor





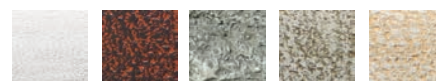
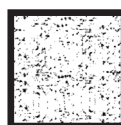


Maceteros Clásicos

Maceteros de toda la vida que nunca pasan de moda.

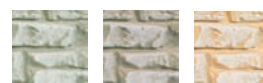
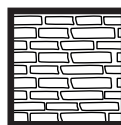
Acabados y Colores

Clásico



Blanco Óxido Musgo Verde Ocre

Ladrillo



Musgo Verde Ocre

Consultar página 15 - Consulter la page 15
-Consult the page 15

Delrey



Ø43 x ↑44
45 Kg - 20 L



Ø53 x ↑62
80 Kg - 40 L

Cabana



Ø70 x ↑56
90 Kg - 62 L

Versalles



Ø35 x ↑36
20 Kg - 4 L



Hojani



Ø32 x ↑49
33 Kg - 9 L

Hojante

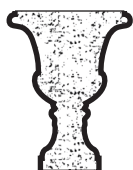


Ø35 x ↑63
51 Kg - 20 L

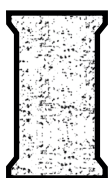


Ø45 x ↑76
98 Kg - 54 L

Perí



Ø53 x ↑70
55 Kg - 25L



Columna Alta

↔42 x 42 x ↑72
90 Kg
Opcional. No Incluido -
En option. Non inclus -
Optional. Not included

Mérica



Ø52 x ↑52
Ø38 (Interior)
50 Kg - 19L



Columna Mérica

↔33 x 33 x ↑44
40 Kg
Opcional. No Incluido -
En option. Non inclus -
Optional. Not included

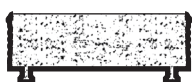


Arcón

Opción Azulejos - Option carrelages - Tiling option



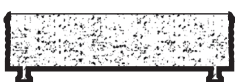
Natural Verde



↔80 x ↗35 x ↑30
67 Kg - 40 L



Azulejo Dalias



↔100 x ↗35 x ↑30
82 Kg - 52 L



Azulejo Narciso

Baúl

Opción Azulejos - Option carrelages - Tiling option



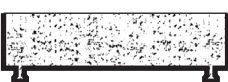
Natural Verde



↔80 x ↗35 x ↑30
67 Kg - 40 L



Azulejo Guzmania



↔100 x ↗35 x ↑30
90 Kg - 52 L



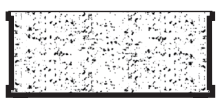
Azulejo Muscari

Mirambel

Opción Azulejos - Option carrelages - Tiling option



Natural Arena



↔90 x ↗36 x ↑40
63 Kg - 76 L



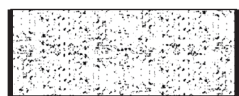
Azulejo Acady (Color Ocre)



Azulejo Baltic (Color Verde)



Tabita



↔100 x ↗40 x ↑40
113 Kg - 110 L

Nicol



↔40 x ↗40 x ↑40
43 Kg - 45 L

Lola



↔91 x ↗36 x ↑46
73 Kg - 70 L

Tronco



Ø35 x ↑36
45 Kg - 16 L

Jacobo



↔100 x ↗39 x ↑39
85 Kg - 106 L

Jacinto



↔40 x ↗40 x ↑40
50 Kg - 37 L

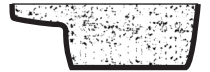


Mortero



Ø33 x ↗30
43 Kg - 4 L

Peder



↔83 x ↗54 x ↑28
95 Kg - 40 L

Bedero



↔82 x ↗36 x ↑24
63 Kg - 37 L

Balbino



Ø42 x ↑16
21 Kg - 8L

Bili



↔45 x ↗25 x ↑10
9 Kg - 5 L



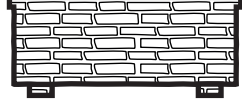
↔58 x ↗37 x ↑14
22 Kg - 12 L



↔70 x ↗50 x ↑20
42 Kg - 31 L



Anabel



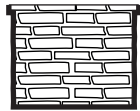
↔98 x ↗38 x ↑42
84 Kg - 80 L

Garrucha



↔50 x 50 x ↑50
50 Kg - 50 L

Mojácar



↔63 x ↗50 x ↑45
57 Kg - 45 L

Saxo



Ø51 x ↑47
46 Kg - 50 L





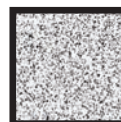


Maceteros Granito

Estilo urbano,
terminación en
china lavada y
bordes pulidos.

Acabado

Granito



Colores



Blanco Carta Ral

Consultar página 15 - Consulter la page 15
- Consult the page 15

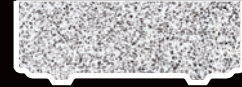
Bogart



↔61 x ↗25 x ↑34
38 Kg - 20 L



↔80 x ↗30 x ↑36
58 Kg - 35 L

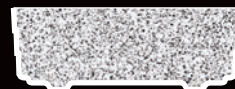


↔100 x ↗30 x ↑36
71 Kg - 42 L

Sofía



↔80 x ↗30 x ↑36
58 Kg - 40 L



↔100 x ↗30 x ↑36
65 Kg - 46 L

Travolta



↔98 x ↗39 x ↑40
60 Kg - 70 L

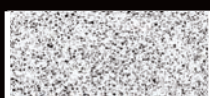
Rita



↔115 x ↗48 x ↑41
109 Kg - 91 L

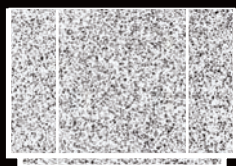


Melani



↔90 x ↗27 x ↑38
44 Kg - 67 L

Oropesa



↔100 x ↑70
370 Kg - 230 L

Benidorm



↔62 x ↑48
82 Kg - 55 L

Cadaqués



↔42 x ↑32
25 Kg - 15 L





La Manga



↔32 x 32 x ↑32
25 Kg - 15 L



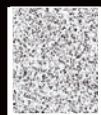
↔50 x 50 x ↑47
84 Kg - 51 L

Roquetas



↔42 x 42 x ↑44
26 Kg - 31 L

Vinarós



↔40 x 40 x ↑48
39 Kg - 55 L



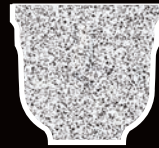
Corinto



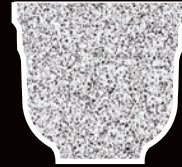
ø38 x ↑33
26 Kg - 12 L



Ø52 x ↑46
65 Kg - 40 L



ø65 x ↑62
96 Kg - 90 L

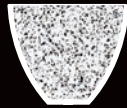


ø79 x ↑79
192 Kg - 190 L

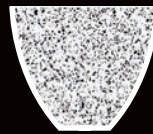
Fuengirola



ø36 x ↑30
20 Kg - 10 L



ø51 x ↑42
37 Kg - 35 L



ø68 x ↑51
80 Kg - 70 L

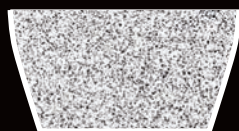
Menorca



ø50 x ↑51
40 Kg - 33 L



Altea



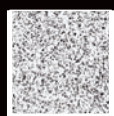
ø102 x ↑53
192 Kg - 175 L

Denia



ø44 x ↑39
49 Kg - 25 L

Calpe



ø45 x ↑47
33 Kg - 55 L





Figuras





Información técnica

Information technique

Technical information

Medidas - Dimensions - Measures

Las medidas de longitud están expresadas en centímetros.

Les dimensions sont exprimées en centimètres.

Measures are expressed in centimeters.

↑ Alto (cm) - Haut - Height

↔ Ancho (cm) - Larg. - Width

↘ Fondo (cm) - Prof. - Depth

∅ Diámetro (cm) - Diamètre - Diameter

El peso se expresa en Kilogramos.

Le poids s'exprime en Kilogramme.

The weight is expressed in Kilogram.

Kg: Kilogramos - Kilogrammes - Kilograms

Croquis - Croquis - Drawing



Croquis realizados a escala aproximada para identificar el acabado y para comparar el tamaño con otro producto de manera orientativa. No debe utilizarse para mediciones exactas.

Croquis réalisés à échelle approximative afin d'identifier la finition, et de pouvoir comparer la taille de plusieurs articles entre elles d'une manière orientative. Ne pas prendre comme mesures exactes.

Drawings made to approximate scale in order to identify the finish, and to be able to compare the size of several items with each other in an orientative way. Do not take as exact measurements.

Acabados

Las figuras y animales combinan diversas texturas para lograr imitar de forma precisa la figura que representan.

Les figurines et animaux mélangent diverses textures permettant d'imiter au mieux l'aspect réel qu'ils représentent.

The figurines and animals mix various textures to best imitate the real aspect they represent.

Colores

Color. Figuras pintadas con diferentes colores y tonalidades.* - Figurines peintes dans des couleurs et tons différents. - Figures painted in different colors and tones.

Musgo, Ocre, Gris & Verde. Toda la pieza se pinta con uno de estos colores naturales. Se trata de tintas naturales aplicadas con productos sintéticos.* - La pièce est entièrement peinte dans une de ces couleurs naturelles. Ce sont des teintes naturelles appliquées avec des produits synthétiques. - The piece is completely painted in one of these natural colors. These are natural colors applied with synthetic products.

Óxido. Toda la pieza se pinta con el color óxido.* - La pièce est entièrement peinte en couleur Óxido. - The piece is completely painted in Óxido color.

Cooper & Policromado. La pieza se pinta en dos tonalidades arlequín y con resultado brillante.* - La pièce est peinte en 2 tons Arlequin avec un résultat brillant. - The piece is painted in 2 Harlequin tones with a shiny result.

Plata. Toda la pieza se pinta con pintura especial arlequín plata.* - La pièce est entièrement peinte en Plata, peinture spéciale arlequín. - The piece is completely painted in Plata, special arlequin paint

*Los colores pueden sufrir variaciones sensibles de tonos con respecto a las fotos, la técnica de pintura es artesanal.

Les couleurs peuvent varier sensiblement de tons par rapport aux photos. La technique de peinture est artisanale.

Colors may vary significantly in tone from photos. The painting technique is artisanal

Rintintín



Color



Musgo



↑ 40
17 Kg

Duke



↑ 24
6 Kg

Vago



Color



Musgo



↑ 41
13 Kg

Danko



↔ 30
4,5 Kg

Toby



↑ 28 ↔ 32
8,5 Kg

Rex



↑ 30 x ↔ 17 x > 34
8 Kg

Buba



↑ 26 x ↔ 23
6 Kg



Rufus



↑ 19
3 Kg



Roxy



↔ 21
1,5 Kg

Bonnie



↑ 23
2,5 Kg

Dafne



↑ 22
3,5 Kg

Berlioz



↑ 33 ↔ 30 ↗ 22
16,5 Kg



Tambor



↑ 34 x ↔ 36
13 Kg

Rabit



↑ 28 ↔ 35
15 Kg

Buny



↔ 35 x ↑ 19
10 Kg

Celé



↑ 12 x ↔ 17
2 Kg

Pelé



↑ 12
1 Kg

Melé



↑ 12 x ↗ 12
1 Kg




Enzo



↗23
5 Kg


Ozzy



↗17
2,5 Kg



Sindy



↗21
4 Kg



Tic




↑17 x ↔17
2 Kg

Tac




↑20 x ↗15
2 Kg

Oara




↑39
4 Kg

Nam




↑44
4 Kg

Panta




↑55
15 Kg



Linda



Ø24
4 Kg

Samanta



↔16
2,5 Kg



↔21
4 Kg

Gari



↔26
5 Kg

Baboso



↔38
18 Kg

Lucero



↑ 81 x ↔ 68 x 56
65 Kg

Ego



↑ 40 ↔ 49
16 Kg

Tuga



↔15
1 Kg



↔28
6 Kg



↔30
9 Kg



Pepita



↑ 23 x ↔ 29
9 Kg

Claudio



↑ 27 x ↔ 27
8 Kg

Amanda



↑ 15 x ↗ 18
2 Kg

Kirikiki



↑ 26 x ↔ 30
9 Kg



Kermit



↑ 16 x ↔ 22
4 Kg

Croac



↑ 11 x ↔ 18
3 Kg

Janet



Color



MUSGO



↑ 44 x ↔ 31
16 Kg

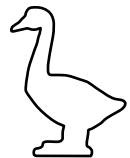
Rina



COLOR



MUSGO



↑ 48 x ↔ 40
14 Kg



Milo



Color



Musgo



↑ 45
18 Kg

Iggy



↑ 26
6 Kg

Pop



↑ 18
2,5 Kg



↑ 23
5 Kg

Turul



Color



Musgo



↑ 70
44 Kg

Arpia



↑ 37 x ↔ 20 x 16
6,5 Kg



Tedy



Pardo



Musgo



↑ 59 x ↔ 60
105 Kg

Winy



Pardo



Musgo



↑ 33 x ↗ 44
22 Kg

Xibao



↑ 53
80 Kg



Leo



Musgo



Color



↑ 55 x ↔ 35 x ↗ 35
45 Kg



Pedestal
↑ 40 x ↔ 42 x ↗ 42
64 Kg

Sanson



Color



Musgo



↔ 28 x ↗ 65
49 Kg

Caco



↑ 33
11,5 Kg

Color

Albino



Scott



↑16 x ↔ 16
1 Kg

Zack



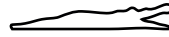
↑16 x >14
1 Kg

Drago



>32 x ↑18
5 Kg

Coco

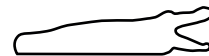


↔ 71
13 Kg

Croki



Color



↔87
30 Kg

Musgo



Erbag



↑18
3 Kg

Linken



↑18
3 Kg

Sicco



↑18
3 Kg

Carlota



↑39
7 Kg

Amanita



↑17
1,2 Kg



↑29
4,2 Kg



Walter



↑ 47
18 Kg

Peter



↑ 43
18 Kg

Dolly



↑ 35
13 Kg

Lilly



↑ 45
13 Kg



Drink



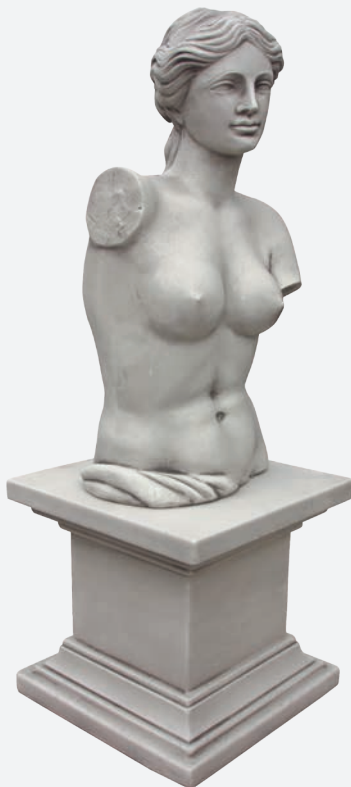
↑ 17 x ↔ 26
4,5 Kg

Irma

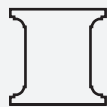


↑ 32 x ↔ 20 x 20
6,5 Kg

Garbo



↑ 75
70 Kg



Pedestal

↑ 42 x ↔ 42
65 Kg

Opcional. No Incluido -
En option. Non inclus -
Optional. Not included

Gretta



↑ 116
92 Kg



↑ 164
220 Kg



Pedestal

↑ 42 x ↔ 42
65 Kg

Opcional. No Incluido -
En option. Non inclus -
Optional. Not included



Óxido



Ocre

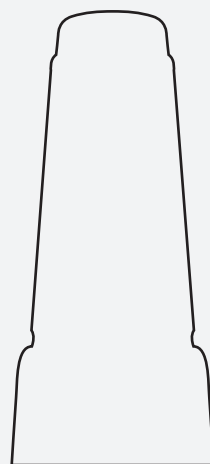


Gris

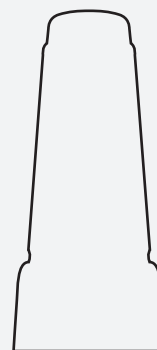


Musgo

Moai



↑ 200 x ↔ 88 x ↗ 70
210 Kg



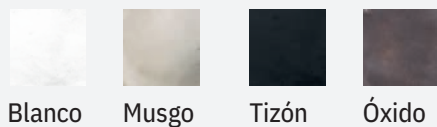
↑ 150 x ↔ 65 x ↗ 50
120 Kg



↑ 100 x ↔ 50 x ↗ 45
50 Kg



↑ 65 x ↔ 40 x ↗ 35
32 Kg



Moai mini



Musgo



Óxido



↑ 27 ↑ 40
3 Kg 8 Kg





Akio



↑ 20
2,7 Kg

Musgo

Goshi



↑ 24
4,5 Kg

Musgo

Keiko



↑ 22
2,6 Kg

Musgo

Ukara



↑ 20
4,6 Kg

Musgo

Vairocana



↑ 17
3 Kg

Musgo

Óxido



Kasapa



Musgo



Plata



↑ 56
30 Kg

Kondana



Musgo



Óxido



↑ 44
18 Kg

Noyé



Musgo



Óxido



↑ 22
4 Kg

Tyco



Musgo



Óxido



↑ 37
13 Kg

Nové



Musgo



Óxido



↑ 22
4 Kg

Nodicé



Musgo



Óxido



↑ 22
4 Kg

Micro



Musgo



Plata



↑ 36
10 Kg

Duplo



Musgo

También disponible en Color
Disponible aussi en Color
Also available in Color



↑ 79 x ↔ 48
95 Kg

Templo



Color

También disponible en Musgo
Disponible aussi en Musgo
Also available in Musgo



↑ 89 x ↔ 48
103 Kg

Pagoda



Musgo



Óxido



↑ 22
4 Kg

Sumana



Musgo



Óxido



↑ 43
12 Kg

Dharma



Musgo



Óxido



↑ 38
12 Kg



↑ 56
38 Kg

Paduma



Musgo



Óxido



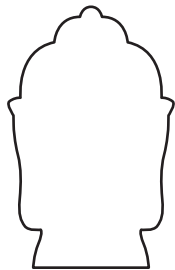
↑ 30
6 Kg



Tao



Tao Policromado



↑ 115 x ↔ 78
68 Kg



Plinto

↑ 70 x ↔ 58 x ↗ 58
102 Kg

Opcional. No incluido -
En option. Non inclus -
Optional. Not included



Musgo



Óxido

Tara



Musgo



Óxido



↑ 49
33 Kg



Revata



Musgo



Óxido



↑ 32
6 Kg

Arhat



↑ 142 x ↔ 100
310 Kg

Cooper



Musgo



Óxido



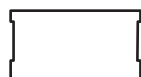
Vipassi



Óxido



↑ 100
85 Kg



Podium

↑ 30 x ↔ 48 x ↗ 66

65 Kg

Opcional. No incluido -
En option. Non inclus -
Optional. Not included



Musgo



Cooper



Sikhi



↑ 64
54 Kg



↑ 80
80 Kg



Óxido



Podium

↑ 30 x ↔ 48 x ↗ 66

65 Kg

Opcional. No incluido -
En option. Non inclus -
Optional. Not included

Cooper



Musgo

Complementos





El detalle que completa el ambiente

Quizás un alcorque o un bordillo, una lámpara o un pozo.

Esta sección reúne un conjunto de complementos para poner el toque definitivo a la ambientación de terrazas y jardines.

Información técnica

Information technique

Technical information

Medidas - Dimensions - Measures

Las medidas de longitud están expresadas en centímetros.

Les dimensions sont exprimées en centimètres.

Measures are expressed in centimeters.

↑ Alto (cm) - Haut. - Height

↔ Ancho (cm) - Larg. - Width

↘ Fondo (cm) - Prof. - Depth

∅ Diámetro (cm) - Diamètre - Diameter

El peso se expresa en Kilogramos.

Le poids s'exprime en Kilogramme.

The weight is expressed in Kilogram.

Kg: Kilogramos - Kilogrammes - Kilograms

Croquis - Croquis - Drawing



Croquis realizados a escala aproximada para identificar el acabado y para comparar el tamaño con otro producto de manera orientativa. No debe utilizarse para mediciones exactas.

Croquis réalisés à échelle approximative afin d'identifier la finition, et de pouvoir comparer la taille de plusieurs articles entre elles d'une manière orientative. Ne pas prendre comme mesures exactes.

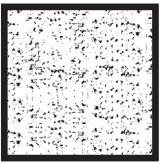
Drawings made to approximate scale in order to identify the finish, and to be able to compare the size of several items with each other in an orientative way. Do not take as exact measurements.

Colores - Couleurs - Colours

Colores Arlequín: Proyecciones de pinturas especiales. Superficies lisas y satinadas.
Couleurs Arlequin: Pulvérisation de peintures spéciales. Surfaces lisses et satinées.
Arlequin colours: Spraying with special paints. Smooth and satin surfaces.

Colores Natural: Tintas naturales aplicadas con productos sintéticos.
Couleurs Natural: Application de teintés naturelles avec des produits synthétiques.
Natural colors: Application of natural tints with synthetic products

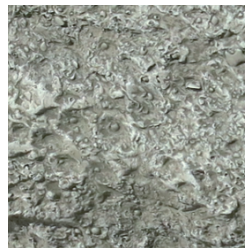
Clásico Classique Classic



Colores Natural - Couleurs Natural - Natural colors



Blanco



Musgo

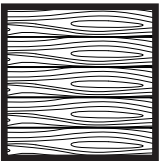


Verde



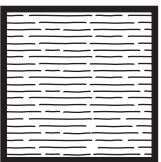
Ocre

Madera Bois Wood



Los colores Clásicos también están disponibles para el acabado Madera
 Des couleurs classiques sont également disponibles pour la finition Bois
 Classic colors are also available for the Wood finish

Líneas Lignes Lines

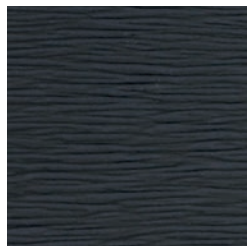


Acabado Líneas solo disponible para Mefisto. Los colores clásicos también están disponibles para el acabado Liso.

Finition Lignes uniquement disponible pour Mefisto. Les couleurs classiques sont également disponibles pour la finition Lignes.

Lines Finish only available for Mefisto. The classic colors are also available for the Lines finish.

Colores Arlequín - Couleurs Arlequin - Arlequin colours



Wengué



Cualquier color de la carta RAL
 - Couleur au choix dans le
 nuancier RAL - Color of your
 choice from the RAL color chart

Oleada



Ø50 (Interior)
Ø72 (Exterior)
↑ 20
76 Kg



Ø70 (Interior)
Ø90 (Exterior)
↑ 20
98 Kg



Ø96 (Interior)
Ø120 (Exterior)
↑ 20
146 Kg

Estrada



Ø45 (Interior)
Ø65 (Exterior)
↑ 20
42 Kg



Ø60 (Interior)
Ø80 (Exterior)
↑ 20
58 Kg



Ø90 (Interior)
Ø110 (Exterior)
↑ 20
98 Kg

Bordo



Ø71 (Interior)
Ø91 (Exterior)
↑ 20
98 Kg

Cerpe



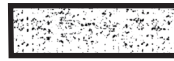
↔34 x ↗12 x ↑21
16 Kg



Olas



Ángulo
↔25 x ↗25 x
↑22
16 Kg



Bordillo
↔74 x ↗12 x
↑22
35 Kg



Asterix



Ángulo
↔16 x ↗10 x
↑25
8,5 Kg



Bordillo
↔60 x ↗8 x
↑22
22 Kg



Piña



↑ 43
16 Kg

Tronquillo



Ø35 x ↑ 5
10 Kg

Musgo

También disponible en color Madera
Disponibile aussi en Madera
Also available in Madera

Travis



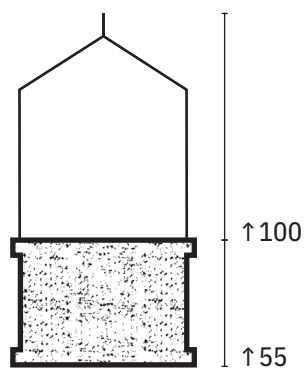
↔ 60 x ↗ 25 x ↑ 4
16 Kg



↔ 90 x ↗ 25 x ↑ 4
24 Kg

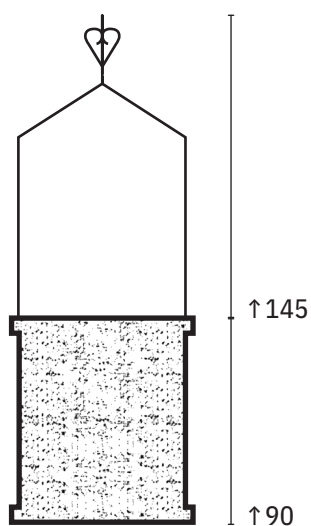


Pozo Pequeño



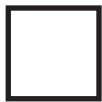
Ø80 x ↑155
152 Kg

Pozo Grande



Ø80 x ↑235
226 Kg

Placas Hormigón



↔40 x 40 x ↑4

14 Kg

Color: GRIS O
BLANCO



↔100 x 40 x ↑4

35 Kg

Color: GRIS O
BLANCO

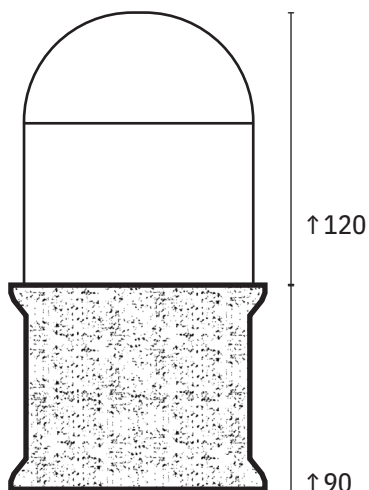
Placas de hormigón ideales para colocar sobre césped artificial o natural. Coloque unas tiras de césped entre las losas, quedando su superficie a ras sin sobresalir, y evite que el césped se desgaste en las zonas de paso. También apropiadas para poner sobre grava y hacer más cómodo caminar. Medidas especiales, pedir presupuesto.

Plaques en béton. Idéal pour la pose sur gazon artificiel ou naturel. Poser des bandes de gazon entre chaque plaque au même niveau, afin de préserver le gazon dans les zones de passage. Convient aussi très bien pour aposer sur gravier et rendre la marche plus confortable. Pour toute mesure spéciale, solliciter un devis.

Concrete Slabs. Ideal for using with synthetic or natural grass. Place strips of grass between the slabs, to an even high to avoid excessive wear on heavy traffic areas. The slabs are easy to lay on gravel as well to create comfortable walkways. For any special measure, please contact us.



Toribio



↔112 x ↑210
315 Kg

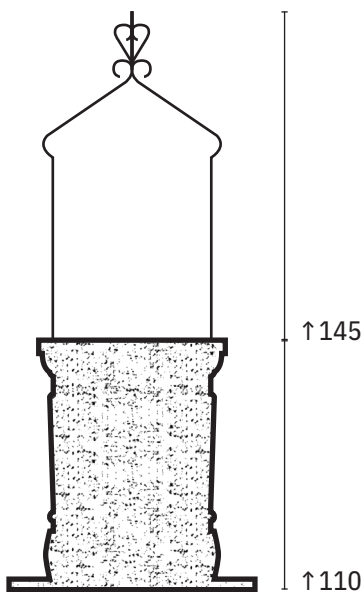
Pozo entregado con todos los accesorios de la foto: arco de hierro, cubo, cuerda, gafrucha. Montado en palet.
Cuerpo del pozo se descompone en 3 partes: corona, cuerpo y base.
Los azulejos están pintados a mano.

Puits livré avec tous les accessoires de la photo: arc-en-fer, seau, corde, poulie. Puits monté sur palette: facile à présenter en magasin.

Corps du puits se décompose en 3 parties: couronne-corps-base.
Les carrelages du modèle Toribio sont peints à la main.

Well delivered with all the accessories shown in the picture: iron arch, bucket, cord, pulley. Mounted on pallet: easy to display in store.
The well has three parts: crown - body - base.
Hand painted tiles for Toribio model.

Ailén



Ø110 x ↑235
285 Kg

↑145

↑110



Mefisto

Tubo en acero inoxidable.

Globo de policarbonato (protección IP44) enroscado sobre soporte negro.

Farolas entregadas sin bombilla ni cable.

Tube en acier inoxydable.

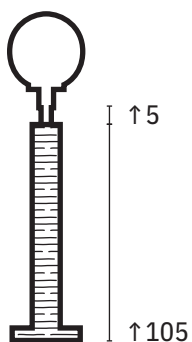
Globe en pvc vissé sur support noir (protection IP44)

Lampadaires livrés sans ampoule ni câble.

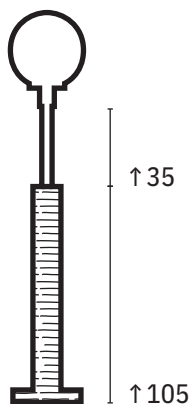
Satinless steel tube.

Polycarbonate globe (IP44 protection) screwed into black support.

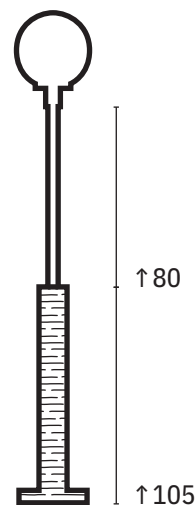
Lamps delivered without light bulbs or cable.



Small
↔30 x ↑144
60 Kg



Medium
↔30 x ↑172
60 Kg

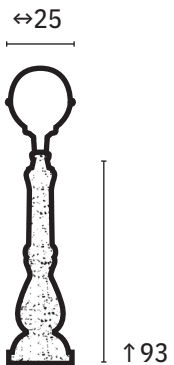
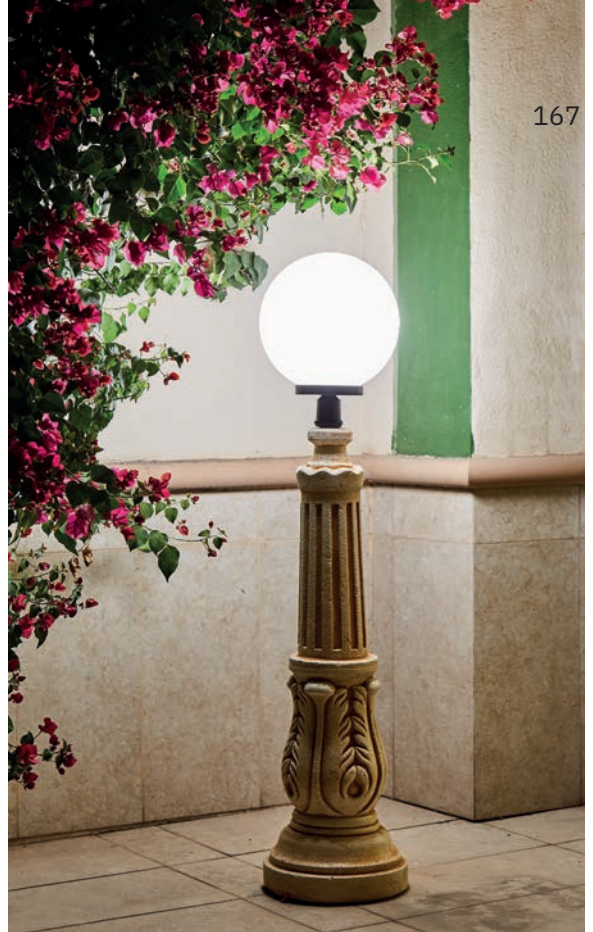


Large
↔30 x ↑216
60 Kg

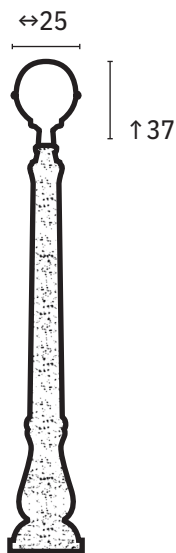
Calisto

Globo de policarbonato (protección IP44) enroscado sobre soporte negro.
 Farolas entregadas sin bombilla ni cable.
 Globe en pvc vissé sur support noir (protection IP44)
 Lampadaires livrés sans ampoule ni câble.
 Polycarbonate globe (IP44 protection) screwed into black support.
 Lamps delivered without light bulbs or cable.

Luna



↔26 x ↑130
60 Kg



↔33 x ↑228
90 Kg

Fuentes





Información técnica

Information technique

Technical information

Medidas - Dimensions - Measures

Las medidas de longitud están expresadas en centímetros
Les dimensions sont exprimées en centimètres
Measures are expressed in centimeters.

↑ Alto (cm) - Haut. - Height

↔ Ancho (cm) - Larg. - Width

↘ Fondo (cm) - Prof. - Depth

∅ Diámetro (cm) - Diamètre - Diameter

El peso se expresa en Kilogramos y la capacidad en Litros
Le poids s'exprime en Kilogramme, et la capacité en Litres.
The weight is expressed in Kilogram, and the capacity in Liters.

Kg: Kilogramos - Kilogrammes - Kilograms

L: Litros - Litres - Liters

Croquis - Croquis - Drawing



Croquis realizados a escala aproximada para identificar el acabado y para comparar el tamaño con otro producto de manera orientativa. No debe utilizarse para mediciones exactas.
Croquis réalisés à échelle approximative afin d'identifier la finition, et de pouvoir comparer la taille de plusieurs articles entre elles d'une manière orientative. Ne pas prendre comme mesures exactes.

Drawings made to approximate scale in order to identify the finish, and to be able to compare the size of several items with each other in an orientative way. Do not take as exact measurements.

Accesorios - Accessoires - Accessories

Focos LED Waterproof (x2) - Projecteurs LED waterproof (x2) - Spotlights LED waterproof (x2)



Disponibles como opción para fuentes.
Disponibles comme option pour fontaines
Available as an option for fountains

Incluyen mando a distancia para el control de la luz.
Inclus télécommande à distance pour le contrôle de la lumière.
Included remote control for light control.

Cable desde transformador a 1er foco de 4 metros.
Câble de 4 m., du transformateur au 1er projecteur
Cable from transformer to 1st spotlight : 4 meters

Transformador CE
Transformateur CE
Transformer CE

Cable entre los 2 focos es de 2 metros.
Câble entre les 2 projecteurs : 2 m.
Cable between the 2 spotlights : 2 m.

12v - 6W RGB
12v - 6W RGB
12v - 6W RGB

Estanques de PVC disponibles

Estanque de PVC **190 cm** (disponible con anilla inox)
Liner PVC **190 cm** (disponible avec anneau inox)
Liner PVC **190 cm** (available with stainless steel ring)

Estanque de PVC **225 cm** (NO disponible con anilla inox)
Liner PVC **225 cm** (anneau inox non disponible)
Liner PVC **225 cm** (stainless steel ring not available)

Anilla metal inox para cerco 190cm



Estanque de PVC **270 cm** (NO disponible con anilla inox)
Liner PVC **270 cm** (anneau inox non disponible)
Liner PVC **190 cm** (stainless steel ring not available)

Bomba de agua



Algunas fuentes incorporan una bomba de agua y se clasifican de la siguiente manera:
Certaines fontaines intègrent une pompe à eau et sont classées comme suit:
Some fountains incorporate a water pump and are classified as following way:

Mimouse

300 litros/hora - litres/heure - liters/hour
1,5 metros de cable - mètres de câble - meters of cable

Micra

400 litros/hora - litres/heure - liters/hour
1,5 metros de cable - mètres de câble - meters of cable

Nova 1.5 m

800 litros/hora - litres/heure - liters/hour
1,5 metros de cable - mètres de câble - meters of cable

Nova 10 m

800 litros/hora - litres/heure - liters/hour
10 metros de cable - mètres de câble - meters of cable

Idra 1.5m

1300 litros/hora - litres/heure - liters/hour
1.5 metros de cable - mètres de câble - meters of cable

Idra 10m

1300 litros/hora - litres/heure - liters/hour
10 metros de cable - mètres de câble - meters of cable

Extrema 1.5 m

2.500 litros/hora - litres/heure - liters/hour
1.5 metros de cable - mètres de câble - meters of cable

Extrema 10 m

2.500 litros/hora - litres/heure - liters/hour
10 metros de cable - mètres de câble - meters of cable

Suprema

3.700 litros/hora - litres/heure - liters/hour
10 metros de cable - mètres de câble - meters of cable

Buzo

6.500 litros/hora - litres/heure - liters/hour
10 metros de cable - mètres de câble - meters of cable

Superbuzo

9.000 litros/hora - litres/heure - liters/hour
10 metros de cable - mètres de câble - meters of cable

No incluye bomba de agua



Ciertas fuentes NO incluyen bomba de agua y se indican de la siguiente manera:
Certaines fontaines n'incluent pas de pompe à eau, et sont marquées comme suit:
Certain fountains DO NOT include a water pump and are indicated as follows:

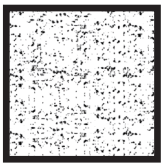
No bomba

Colores por acabados - Finitions couleurs - Colours finishes

Colores Arlequín: Proyecciones de pinturas especiales. Superficies lisas y satinadas.
Couleurs Arlequin: Pulvérisation de peintures spéciales. Surfaces lisses et satinées.
Arlequin colours: Spraying with special paints. Smooth and satin surfaces.

Colores Natural: Tintas naturales aplicadas con productos sintéticos.
Couleurs Natural: Application de teintés naturelles avec des produits synthétiques.
Natural colors: Application of natural tints with synthetic products

Clásico Classique Classic



Colores Arlequín

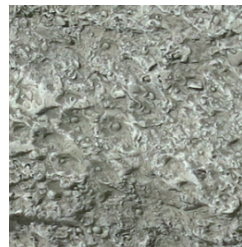


Óxido

Colores Natural



Blanco



Musgo

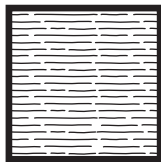


Verde

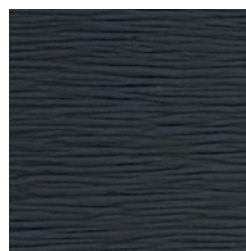


Ocre

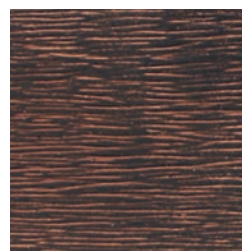
Líneas Lignes Lines



Colores Arlequín

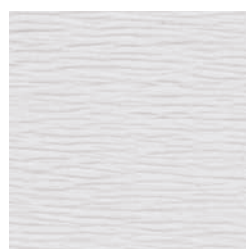


Wengué



Óxido

Colores Natural



Blanco

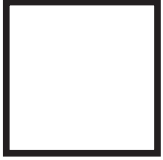


Ocre



Verde

Liso
Lisse
Smooth



Acabado Lineas solo disponible para Mefisto. Los colores clásicos también están disponibles para el acabado Liso.

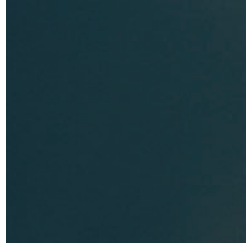
Finition Lignes uniquement disponible pour Mefisto. Les couleurs classiques sont également disponibles pour la finition Lisse.

Lines Finish only available for Mefisto. The classic colors are also available for the Smooth finish

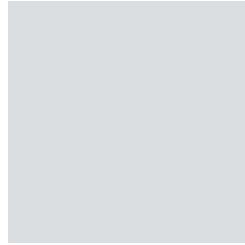
Color Arlequín



Bronze



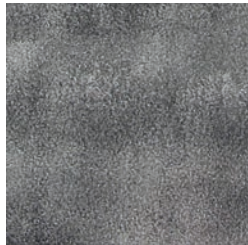
Antracita



Hielo



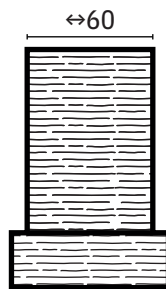
Cualquier color de la carta Ral



Policromado


Solo disponible en Kala
Seulement disponible en Kala
Only available in Kala

Sansara

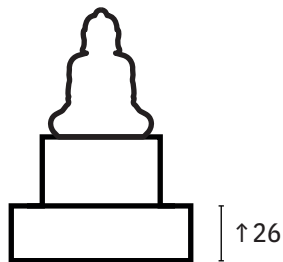


↑ 105 x ↔ 70 x ↗ 33

140 Kg


Nova 1.5m 

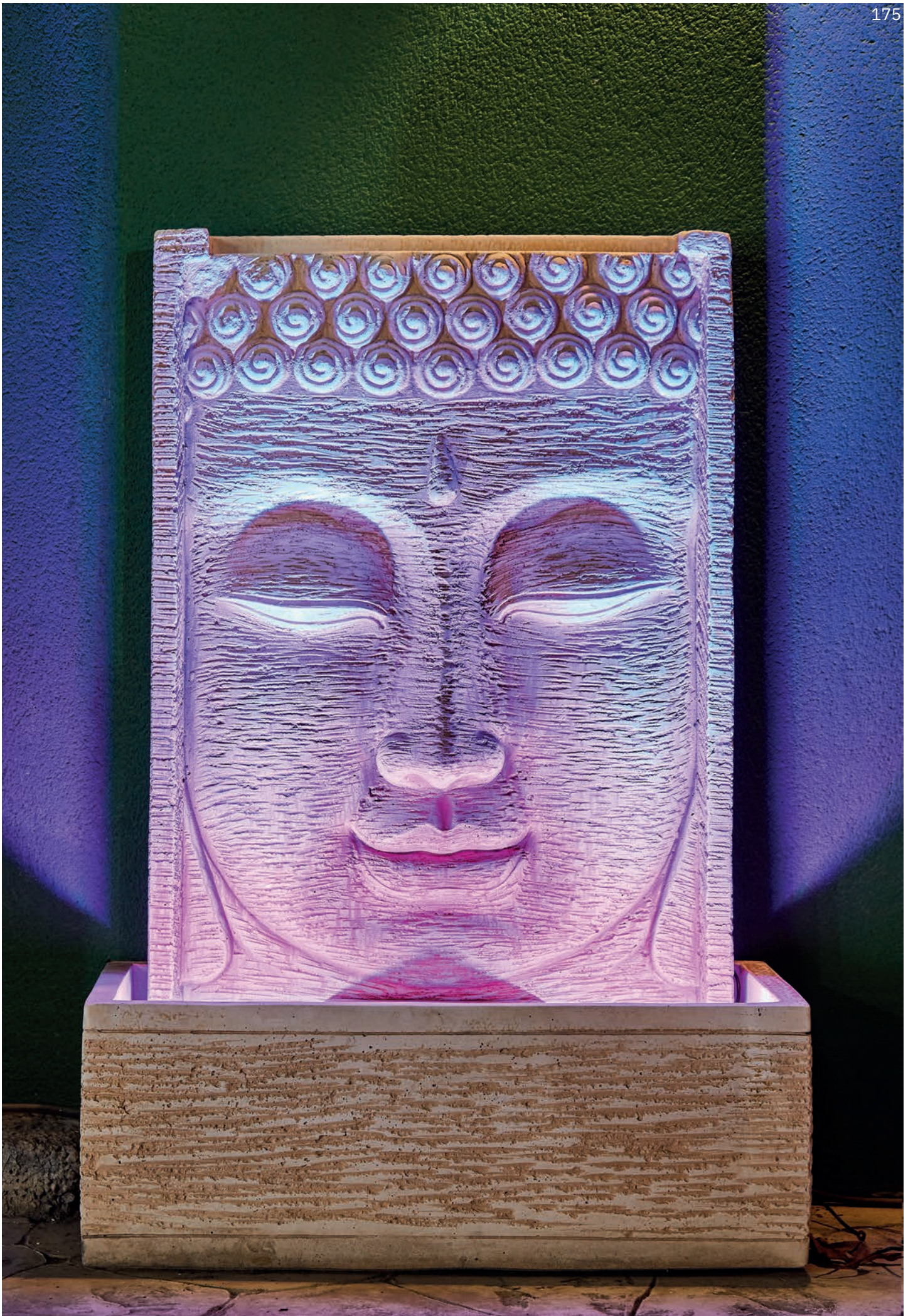
Liviana



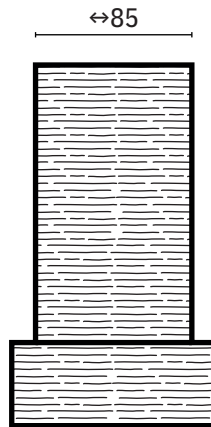
↑ 110 x ↔ 79 x ↗ 79


215 Kg

Nova 1.5m 

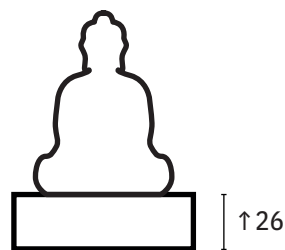



Butsu



↑ 159 x ↔ 90 x ↗ 40
200 Kg
Extrema 1.5m 

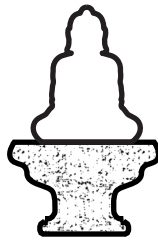
Ester



↑ 102 x ↔ 79 x ↗ 79
158 Kg
Nova 1.5m 




Zen



Ø64 x ↑100

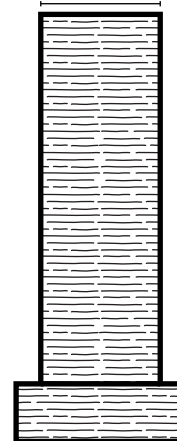
104 Kg

Mimouse 

Sutra




↔50

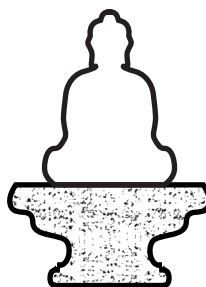


↑185 x ↔70 x ↗33

160 Kg


Extrema 1.5 m 

Relax



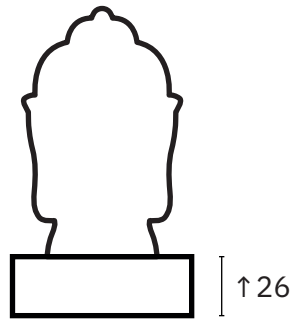
Ø88 x ↑120

200 Kg

Micra 1.5 



Kala



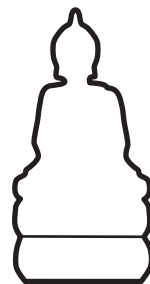
↔79 x ↗79 x ↑135

126 Kg

Idra 1.5 m

Policromado

Small Arhat



↔100 x ↑157

400 Kg



Cerco Small Arhat

Ø190 x ↑25

220 Kg

Extrema 10 m

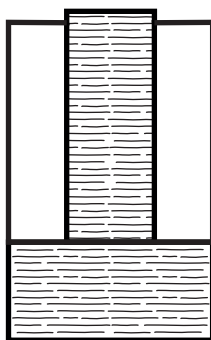
Cerco compuesto de 8 piezas - Bassin composé de 8 morceaux - Pound made up of 8 pieces


Fuente equipada con arco de 8 chorros verticales - Fontaine équipée d'une arche à 8 jets verticaux - Fountain equipped with 8-jet arch vertical

Opción Anilla de metal para cerco - Option anneau métal pour bassin - Option Steel ring for pound

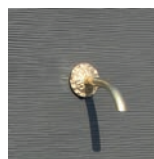


Kalpis Lion



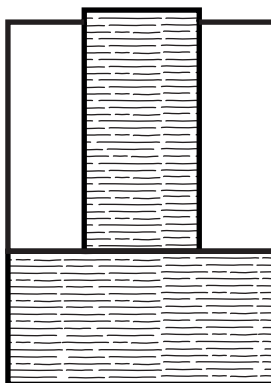
↔90 x ↗40 x ↑145
155 Kg
Idra 1.5 m 


Opción caños



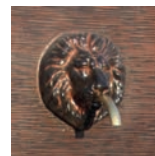
Estándar

Tagana



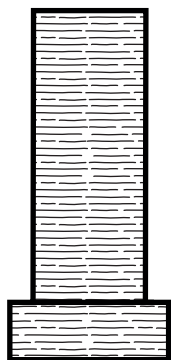
↔118 x ↗50 x ↑165
295 Kg
Suprema 10 m 

Opción caños




Lion

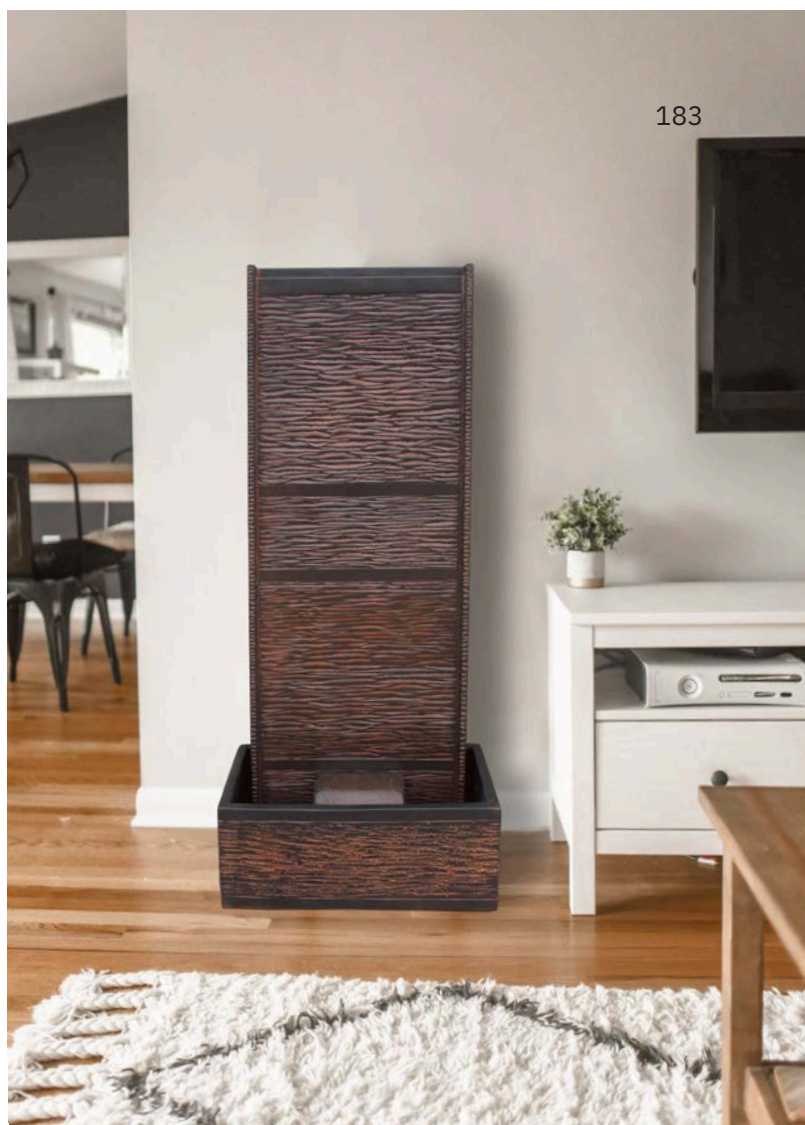
Vesabú



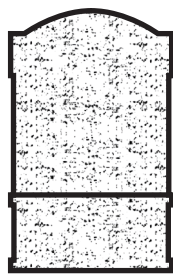
↔70 x ↗33 x ↑154

119 Kg

Extrema 1.5 m 




Arcadia



↔71 x ↗45 x ↑109


139 Kg

No Bomba 

Opción caño



Lion

Idra 1,5 m 

Opción Azulejos - Option carrelages - Tiling option



Butterfly



Columba



Goltis



Snow

Firenze



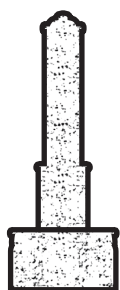
↔45 x ↑67

36 Kg

Micra



Obelisco

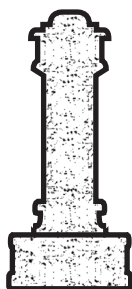


↔47 x ↗66 x ↑122

127 Kg

No Bomba

Mileto



↔53 x ↗62 x ↑122

128 Kg

No bomba

Opción Azulejos - Option carrelages - Tiling option



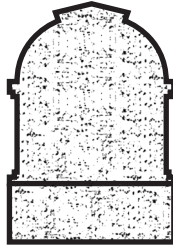
Tostado


Tarento

Goltis

Snow

Alhambra



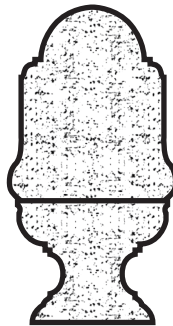
↔73 x ↗43 x ↑105
121 Kg
No Bomba 


Opción Azulejos- Option carrelages -
Tiling option



Colibrí

Aranjuez



↔75 x ↗46 x ↑139
164 Kg
No Bomba 

Opción Azulejos - Option carrelages -
Tiling option

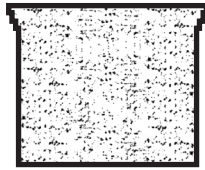


Garza

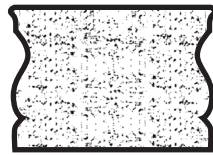


Floral

Fuente Romana



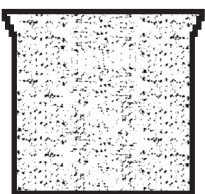
Frontal
↔88 x ↗19 x ↑70
80 Kg



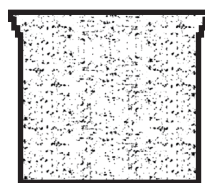
Pila
↔90 x ↗45 x ↑80
239 Kg
No Bomba



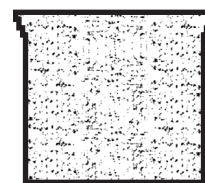
Opciones Frontal - Option Mural - Wall option



Frontal Retablo
↔88 x ↗19 x ↑80
97 Kg

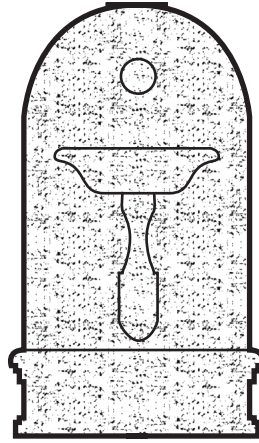



Frontal Rosetón
↔86 x ↗12 x ↑75
64 Kg



Frontal Celosía
↔86 x ↗12 x ↑75
42 Kg

Baluma



↔117 x ↑190
250 Kg
Idra 1.5 m 

Opción Azulejos - Option carrelages - Tiling option



Tostado

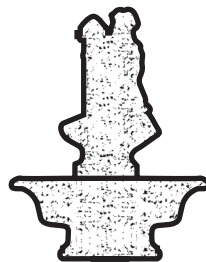



Goltis



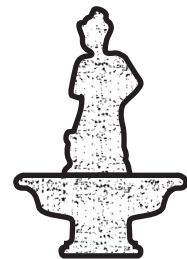
Snow


Afrodita



↔87 x ↑110
180 Kg
Nova 1.5m 

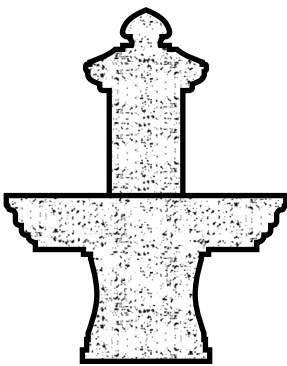
Diana



↔75 x ↑110
132 Kg
nova 1.5m 




Adonis



Opción Azulejos - Option carrelages - Tiling option

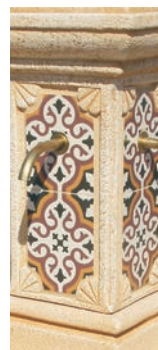
↔120 x ↑155

329 Kg

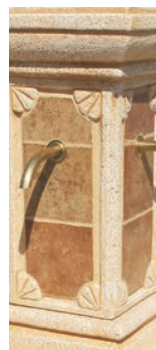
Suprema 10m 



Delfos



Goltis



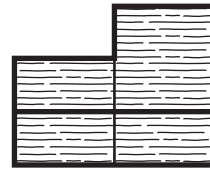
Tostado




Snow

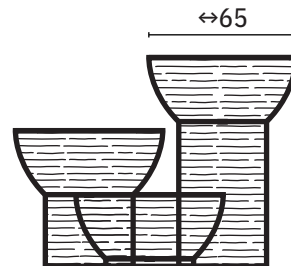



Bezoya



↔80 x ↗80 x ↑70
145 Kg
Idra 1.5 m 

Solán




↔124 x ↗124 x ↑92
210 Kg
Idra 1.5 m 

Arinsal



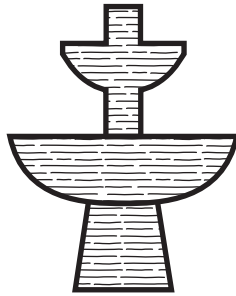
↔60 x ↗51 x ↑72

90 Kg

Extrema 1.5m 




Xilos

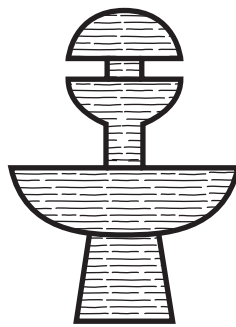


Ø100 x ↑127

180 Kg


Idra 10 m 

Dismos

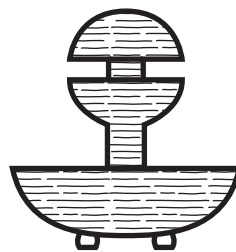


Ø100 x ↑137

210 Kg


Idra 10 m 

Cosmos



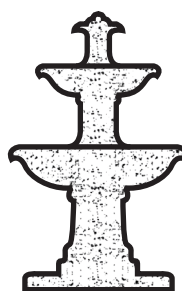
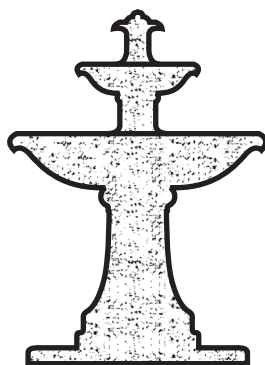
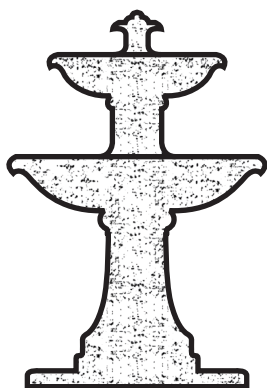
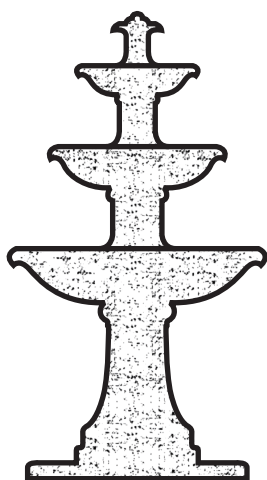
Ø100 x ↑100


180 Kg


Idra 10 m 





Romántica



Grande
Ø112 x ↑ 205
430 Kg
Idra 10 m 
Compatible con Cerco

Mediana
Ø112 x ↑ 165
399 Kg
Idra 10 m 

Pequeña
Ø112 x ↑ 155
358 Kg
Nova 10 m 

Mini
Ø74 x ↑ 120
148 Kg
Nova 1.5 m 
Compatible con Cerco Mini



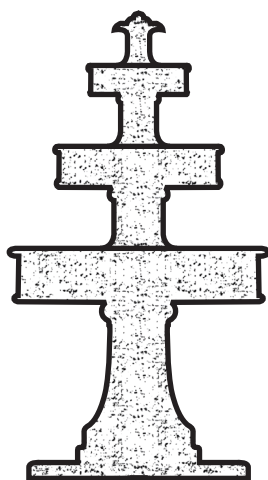
Cerco
Ø200 x ↑ 28
336 Kg




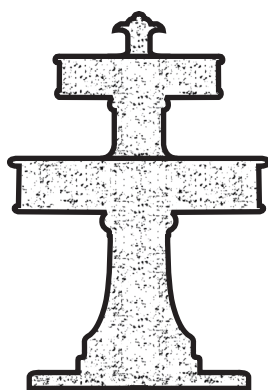
Cerco Mini
Ø165 x ↑ 19
110 Kg




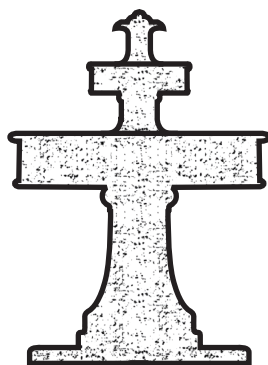
Dalila




Grande
Ø115 x ↑205
527 Kg
Idra 10 m 




Mediana
Ø115 x ↑165
491 Kg
Idra 10 m 



Pequeña
Ø115 x ↑155
426 Kg
Nova 10 m 



Mini
Ø75 x ↑120
182 Kg
Nova 1.5 m 



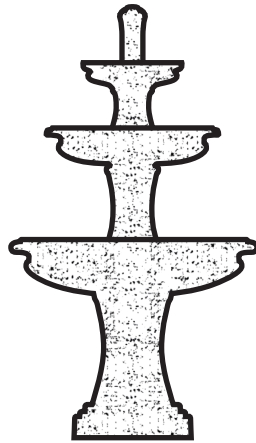
Cercos
Ø200 x ↑28
336 Kg




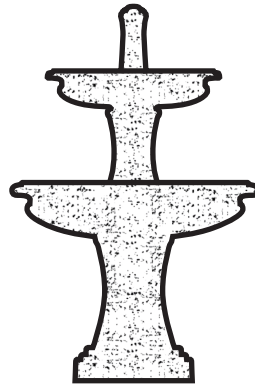
Cercos Mini
Ø165 x ↑19
110 Kg




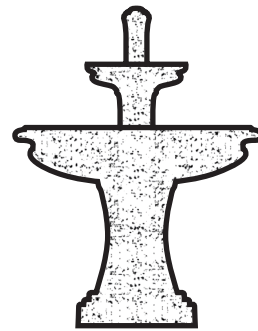
Galia




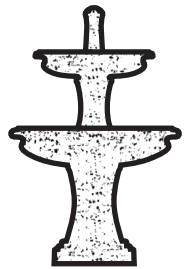
Grande
Ø105 x ↑190
315 Kg
Idra 10 m 




Mediana
Ø105 x ↑165
303 Kg
Idra 10 m 

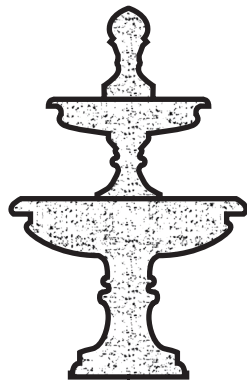



Pequeña
Ø105 x ↑140
252 Kg
Nova 10 m 

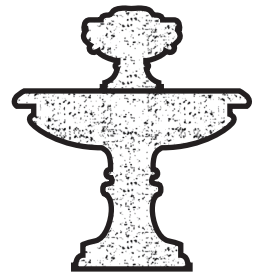



Mini
Ø73 x ↑113
91 Kg
Nova 1.5 m 

Versalles



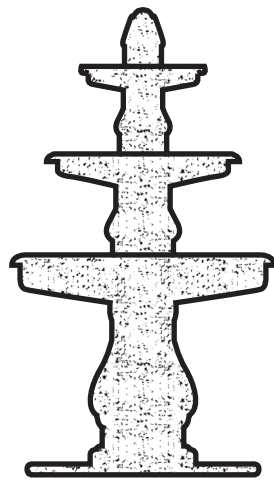
Grande
Ø105x ↑160
292 Kg
Idra 10 m 




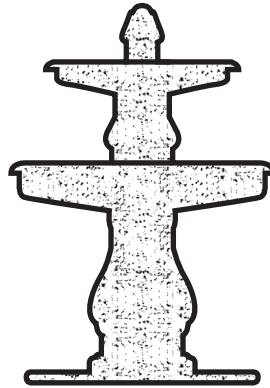
Pequeña
Ø105x ↑115
233 Kg
Idra 10 m 




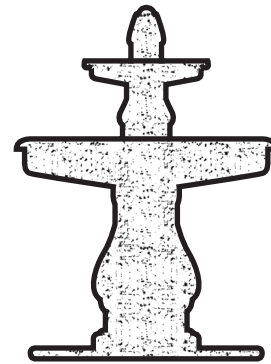
Hojas




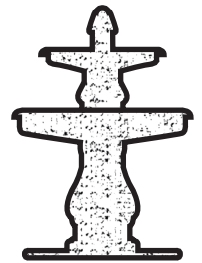
Grande
Ø115 x ↑ 205
472 Kg
Idra 10 m 




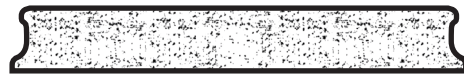
Mediana
Ø115 x ↑ 166
440 Kg
Idra 10 m 



Pequeña
Ø115 x ↑ 155
392 Kg
Nova 10 m 



Mini
Ø78 x ↑ 119
163 Kg
Nova 1.5 m 

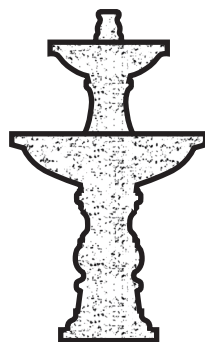



Cercos
Ø200 x ↑ 28
336 Kg



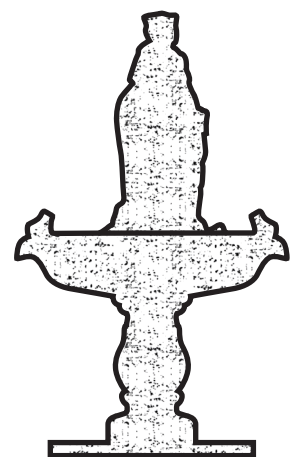
Cercos Mini
Ø165 x ↑ 19
110 Kg


Treveri



Ø80 x ↑ 145
120 Kg
Nova 10 m 

Marité



Ø117 x ↑ 195
411 Kg
Nova 10 m (x2) 



Rosa

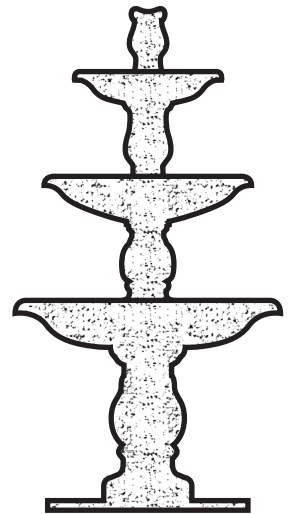
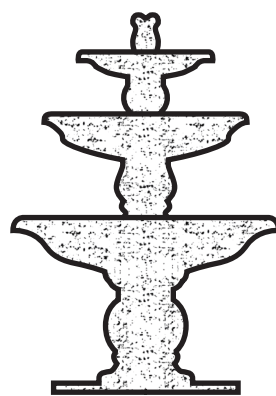
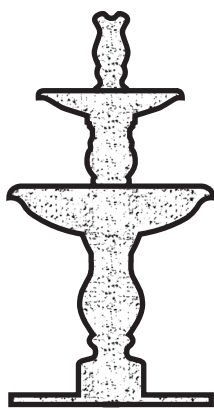
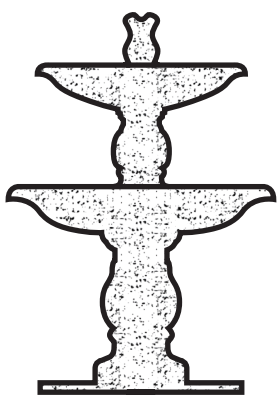


Rosa

Rosenda

Rosita

Rosana



Ø117 x ↑163

437 Kg

Idra 10 m

Ø90 x ↑172

281 Kg

Nova 10 m

Ø117 x ↑163

405 Kg

Extrema 10 m

Ø117 x ↑222

479 Kg

Extrema 10 m



Gran Rosita



Opción Azulejos- Option carrelages - Tiling option



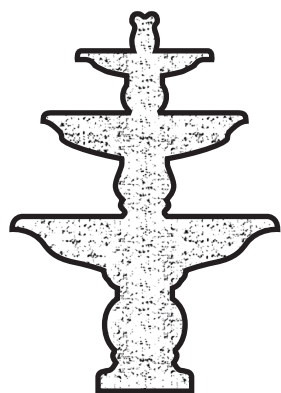
Tostado




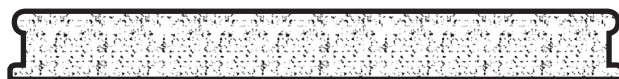
Goltis



Snow

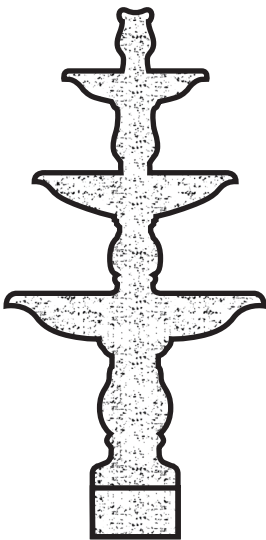


Fuente
Ø120 x ↑185
415 Kg
Suprema 10 m 



Cerco
Ø270 (exterior) x Ø235 (interior) x ↑30
600 Kg

Gran Rosana



Opción Azulejos - Option carrelages - Tiling option



Tostado




Goltis



Snow



Fuente
Ø120 x ↑ 238
479 Kg
Buzo 10 m 

Cerco
Ø270 (exterior) x Ø235 (interior) x ↑ 30
600 Kg

Small Extra Gran Rosana



Opción sin Azulejos

Opción Azulejos - Option carrelages - Tiling option



Natural



Tostado



Goltis



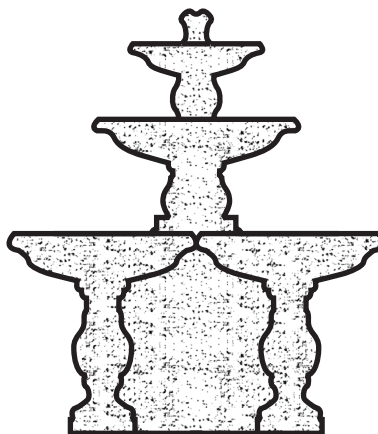
Snow




Florensal



Cerco
Ø270 (exterior) x Ø235 (interior) x ↑ 30
600 Kg



Fuente
Ø166 x ↑ 186
720 Kg
Buzo 10 m 

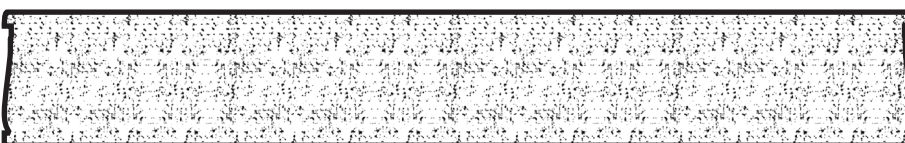
Extra Gran Rosana



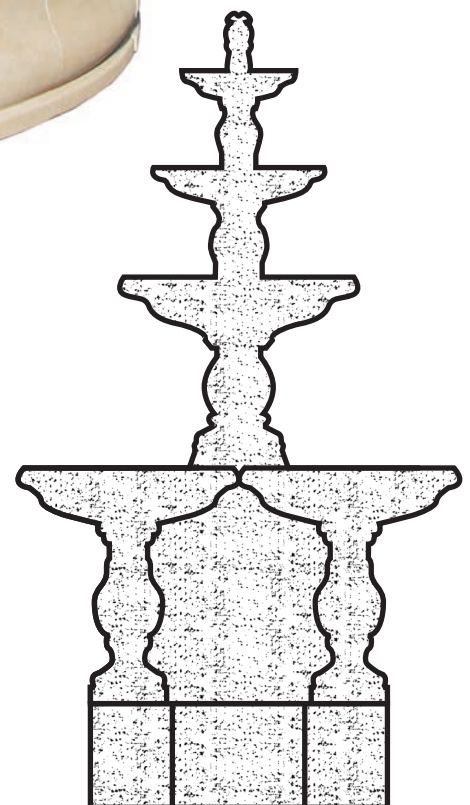
Opción Azulejos - Option carrelages - Tiling option




Azulejo Florensal. También disponible sin azulejo
Carrelage florensal. Disponible aussi sans carrelage
Florensal tiling. Also available without tiling

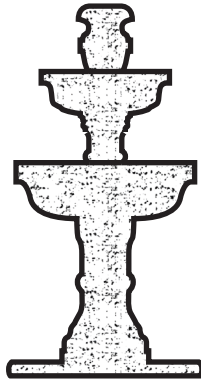


Cerco
Ø400 (exterior)




Fuente
Ø166 x ↑ 350
3.200 Kg con cerco incluido
Superbuzo 10 m 

Dorita

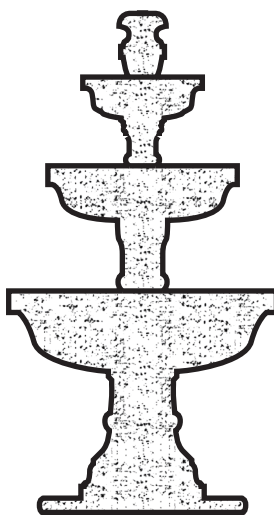


Ø80 x ↑ 163

264 Kg


Extrema 10 m 

Dora

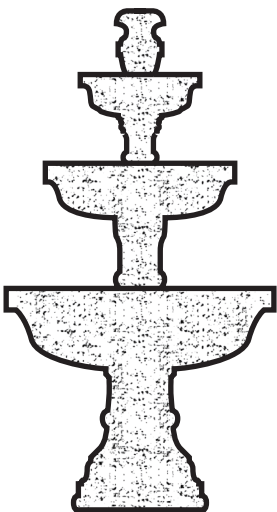


Ø117 x ↑ 220

512 Kg

Extrema 10 m 

Gran Dora



Opción Azulejos - Option carrelages - Tiling option



Tostado



Goltis




Snow



Fuente

Ø117 x ↑ 220

512 Kg

Suprema 10 m 

Cerco

Ø270 (exterior) x

Ø235 (interior) x ↑ 30

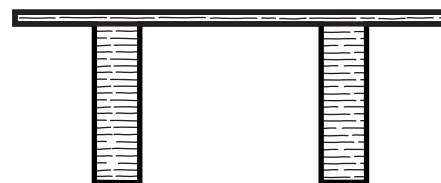
600 Kg

Mobiliario





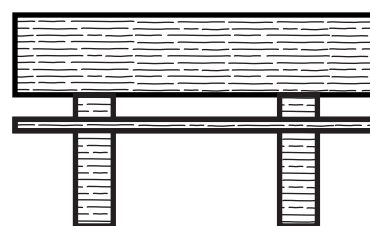
Status



Mesa
↔190 x ↗90 x ↑75
248 Kg



Banco recto pequeño
↔84 x ↗35 x ↑47
62 Kg



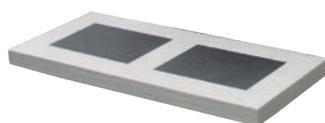
Banco recto con respaldo
↔160 x ↗55 x ↑93
221 Kg



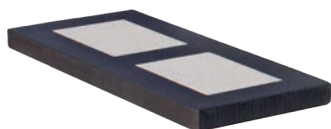
Acabados Disponibles



Vulcan Hielo



Vulcan Betón



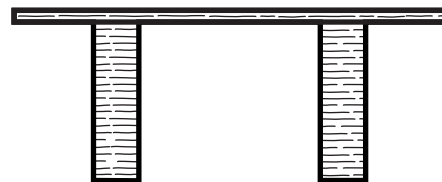
Polar Wengue



Zinc Ocre



Livinston



Mesa
↔190 x ↗90 x ↑75
248 Kg



Banco recto
↔160 x ↗35 x ↑47
121 Kg



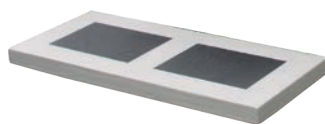
Banco recto pequeño
↔84 x ↗35 x ↑47
62 Kg



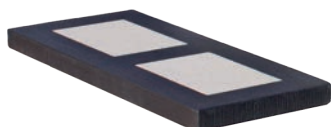
Acabados Disponibles



Vulcan Hielo



Vulcan Betón



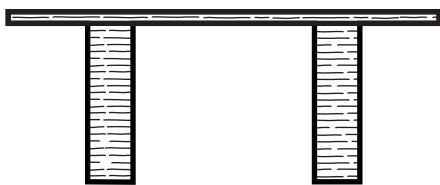
Polar Wengue



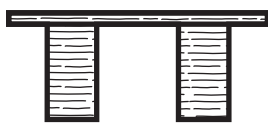
Zinc Ocre



Livinston pulido



Mesa
↔190 x ↗90 x ↑76
248 Kg



Banco curvo
↔124 x ↗53 x ↑47
62 Kg



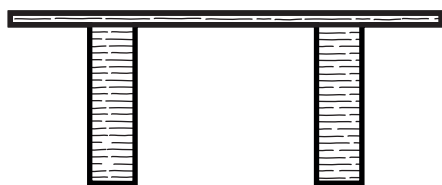
Banco recto
↔165 x ↗44 x ↑47
121 Kg

Colores Disponibles



Hielo Betón Wengue Ocre

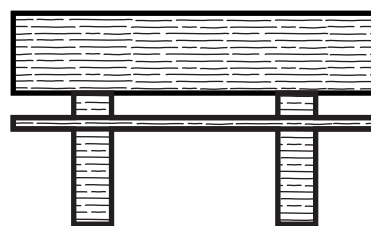
Status pulido



Mesa
↔190 x ↗90 x ↑76
248 Kg

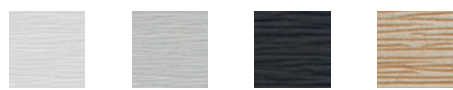


Banco curvo
↔124 x ↗53 x ↑47
62 Kg



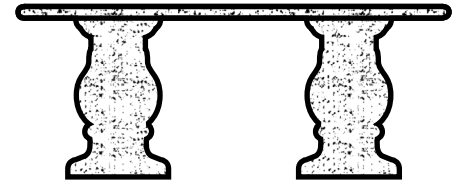
Banco recto con respaldo
↔165 x ↗44 x ↑93
221 Kg

Colores Disponibles

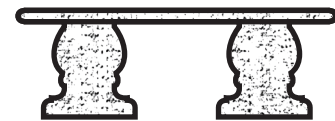


Hielo Betón Wengue Ocre

Fresno

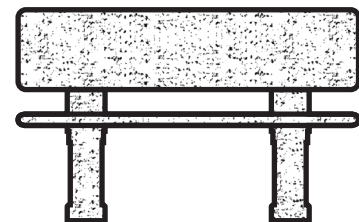


Mesa ovalada
↔194 x ↗93 x ↑74
256 Kg

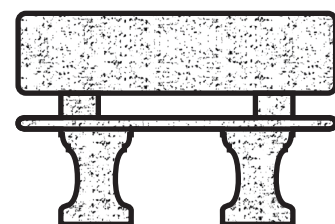


Banco curvo sin respaldo
↔140 x ↗35 x ↑46
112 Kg

Ciruelo

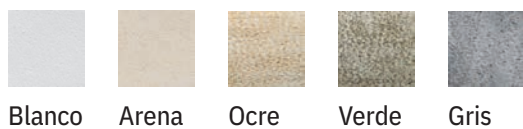


Banco recto con respaldo
↔150 x ↗56 x ↑95
221 Kg

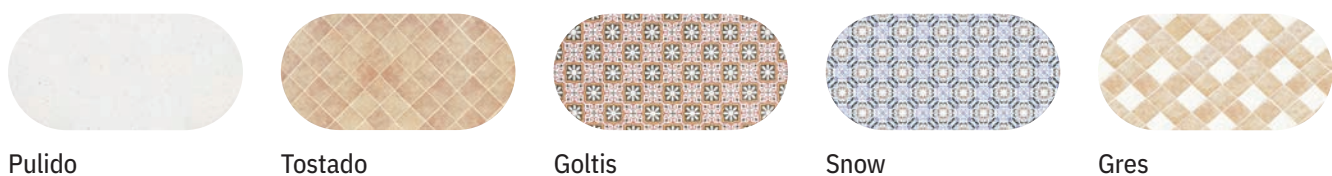


Banco curvo con respaldo
↔140 x ↗56 x ↑88
236 Kg

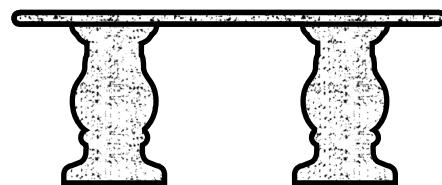
Colores Disponibles



Acabados disponibles



Higuera



Mesa ovalada

↔194 x ↗93 x ↑74

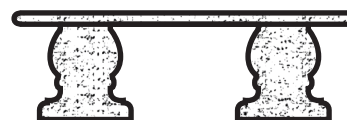
256 Kg



Banco curvo sin respaldo

↔140 x ↗35 x ↑46

112 Kg



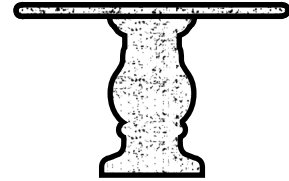
Banco recto sin respaldo

↔150 x ↗40 x ↑46

112 Kg



Álamo

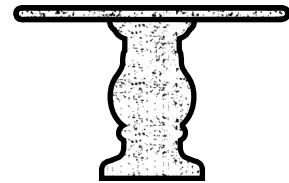


Mesa ovalada
Ø120 x ↑74
175 Kg

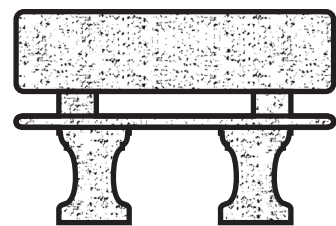


Banco curvo sin respaldo
↔140 x ↗35 x ↑46
112 Kg

Castañó

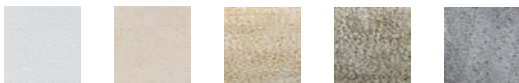


Mesa ovalada
Ø120 x ↑74
151 Kg



Banco curvo con respaldo
↔140 x ↗56 x ↑88
202 Kg

Colores Disponibles



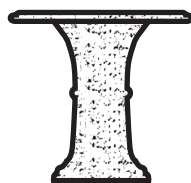
Blanco Arena Ocre Verde Gris

Acabados Disponibles



Pulido Gres Tostado Goltis Snow

Mango



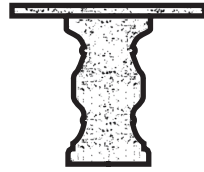
Mesa redonda
Ø80 x ↑74
113 Kg



Taburete
Ø40 x ↑45
38 Kg



Sicilia

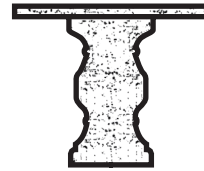


Mesa
Ø85 x ↑70
130 Kg



Taburete
Ø32 x ↑44
28 Kg

Venecia

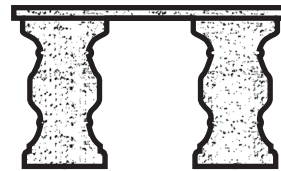


Mesa
Ø110 x ↑70
171 Kg

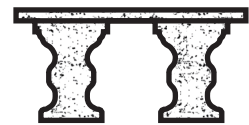


Banco curvo
↔135 x ↗37 ↑40
109 Kg

Milan

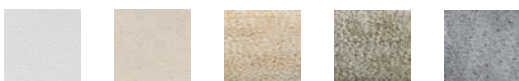


Mesa
↔120 x ↗80 x ↑70
165 Kg



Banco recto
↔100 x ↗33 ↑40
84 Kg

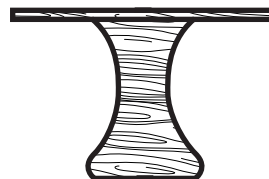
Colores Disponibles



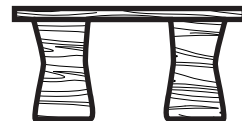
Blanco Arena Ocre Verde Gris



Barto

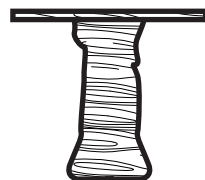


Mesa circular
Ø115 x ↑74
211 Kg



Banco curvo
↔140 x ↗40 ↑46
112 Kg

Berni

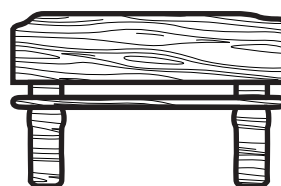


Mesa circular
Ø85 x ↑74
128 Kg



Tabuerete
Ø35 x ↑41
55 Kg

Merco



↔120 x ↗39 x ↑76
206 Kg



Hovista



Acabado



Pulido

Colores Disponibles



Arena



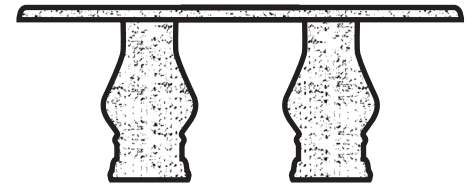
Ocre



Verde



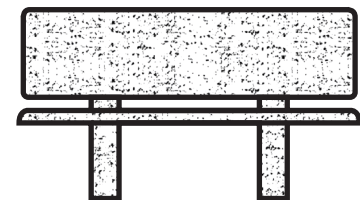
Gris



Mesa ovalada

↔195 x ↗95 x ↑76

337 Kg



Banco recto con Respaldo

↔150 x ↗60 x ↑84

248 Kg

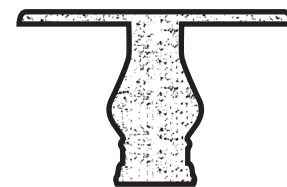
Iris



Banco curvo

↔145 x ↗40 x ↑46

138 Kg



Mesa redonda

Ø120 x ↑76

237 Kg

Lido



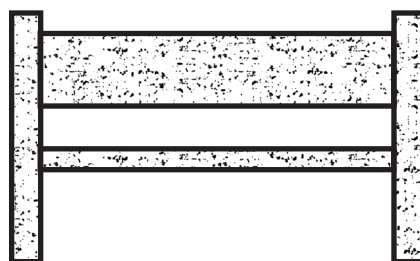
Banco recto

↔150 x ↗40 x ↑46

152 Kg



Nesto



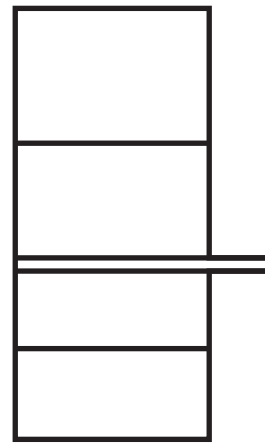
↔187 x ↑94
376 Kg

Barbacoas





Bardem

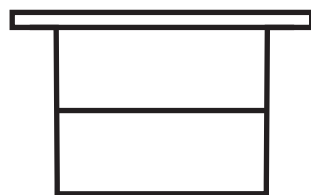


Elige el lado del saliente,
izquierda o derecha
Choisissez le côté de la
projection, gauche ou droite
Choose the side of the
projection, left or right

↑ 80 cm

↔111 x ↗48 x ↑190
220 Kg

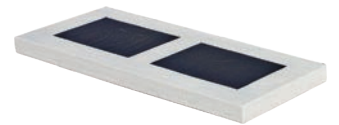
Nélope



↑ 80 cm

↔111 x ↗48 x ↑80
150 Kg

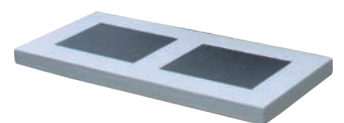
Acabados Disponibles



Vulcan Blanco

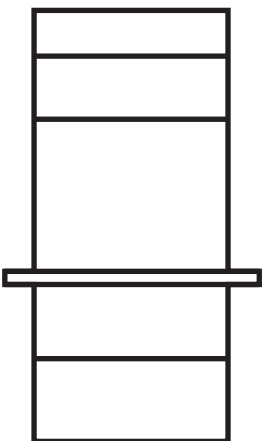


Zinc Ocre



Vulcan Cemento

Barbate



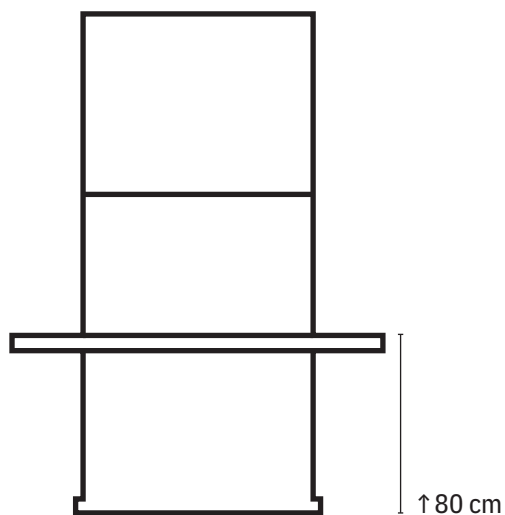
↔106 x ↗76 x ↑205
633 Kg

Colores Disponibles



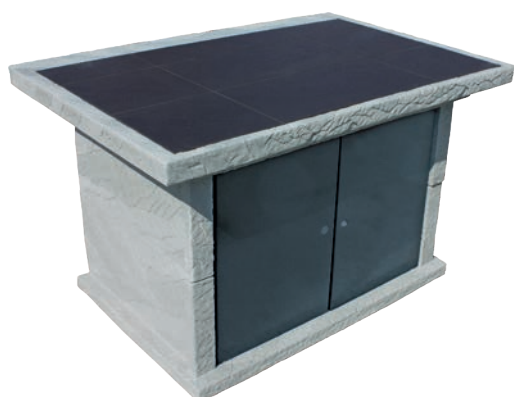
Blanco Ocre Verde Musgo

Bargarita



↔165 x ↗90 x ↑220
850 Kg

Bargaret

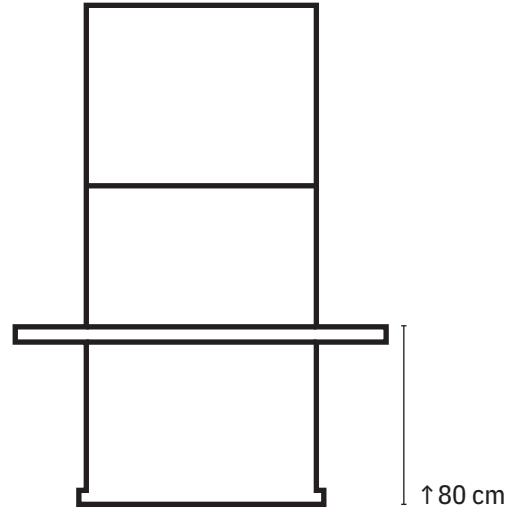


Barolina



↔132 x ↑80 x ↗90
390 Kg

Bariajosé



↔165 x ↑220 x ↗90
850 Kg

Acabados Disponibles



Vulcan Blanco

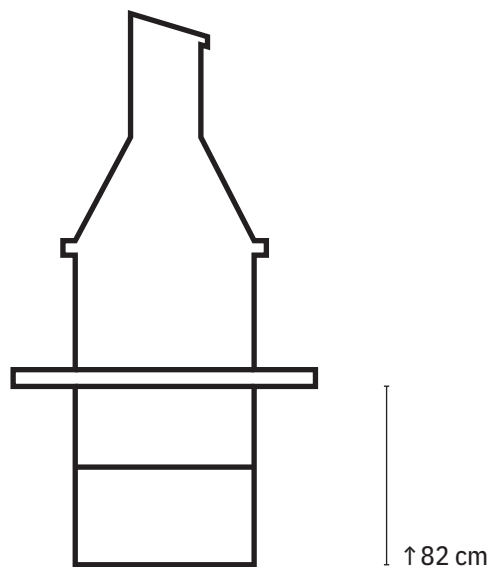


Vulcan Cemento



Zinc Ocre

Barby

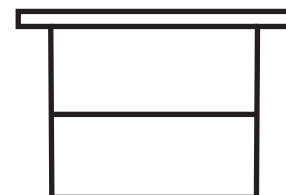


↔133 x ↗76 x ↑243
574 Kg

Malibú

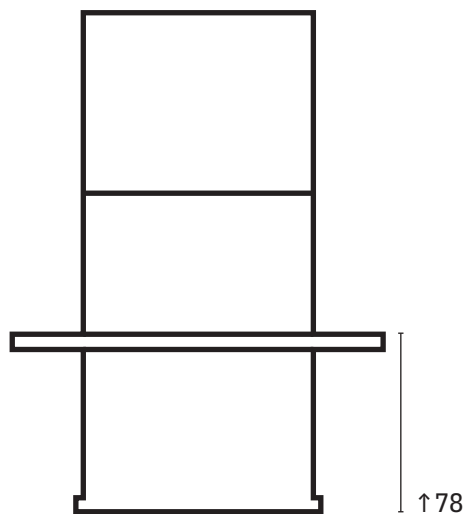


Fantasia



↔120 x ↑182 x ↗76
250 Kg

Barsinson



↔183 x ↗90 x ↑262
820 Kg

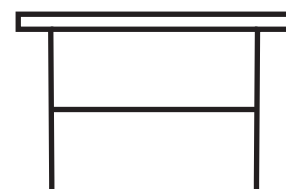
237



Lisa

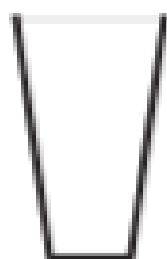
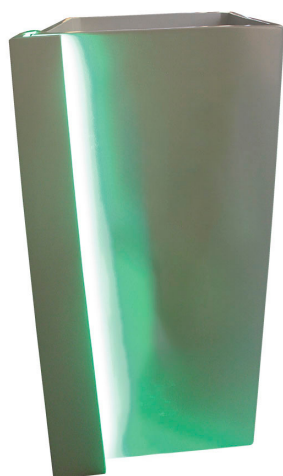


Magui

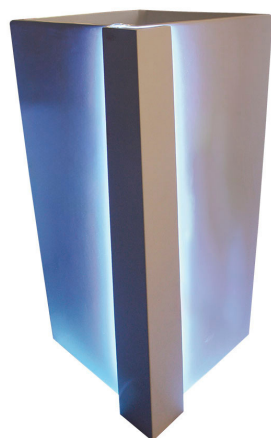


↔120 x ↗90 x ↑78
315 Kg

Super Vasari Publicitaire



↔45 x 45 x ↑ 98
86 Kg - 116L

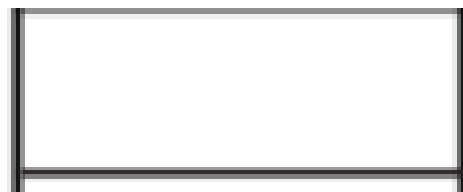




blue
design

Mobiler

Stockolm



↔250 x ↗74 x ↑75
1300 Kg - 1000 L



Maxi bloc jardinière idéal pour les zones urbaines



